



SAILOË

Seychelles | Mahé
Eden Island Marina | Base information

Contents

| | | | |
|--|----|------------------------------------|----|
| Contacts..... | 3 | SAINT-PIERRE ISLAND..... | 32 |
| Emergency numbers..... | 4 | ANSE LAZIO..... | 34 |
| Information and operation of the database..... | 5 | ANSE GEORGETTE..... | 34 |
| The navigation area..... | 10 | GRANDE ANSE | 35 |
| Landing fees..... | 11 | MAY VALLEY and FOND FERDINAND..... | 36 |
| Sample Itineraries..... | 12 | COUSIN ISLAND | 36 |
| The moorings of Mahé | 15 | CURIOUS ISLAND | 37 |
| BEAUVALLON..... | 15 | ARIDE ISLAND | 38 |
| ANSE MAJOR AND ANSE JASMIN | 16 | La Digue and its moorings..... | 39 |
| TERNAY BAY..... | 17 | PORT OF THE PASS | 41 |
| PORT LAUNAY..... | 19 | GRAND'ANSE | 42 |
| THERESSE ISLAND..... | 20 | SMALL HANDLE..... | 43 |
| GRAND ANSE | 21 | ANSE COCO..... | 44 |
| ANSE BOILEAU..... | 22 | COCO ISLAND..... | 45 |
| ANSE LA MOUCHE..... | 23 | DENIS | 46 |
| ANSE TAKAMAKA..... | 24 | The climate..... | 47 |
| ANSE ROYALE..... | 25 | Snorkeling spots..... | 48 |
| SAINTE ANNE MARINE PARK | 26 | Praslin..... | 48 |
| Silhouette Island..... | 27 | La Digue..... | 51 |
| THE PORT OF THE PASS | 27 | Felicite and big sister..... | 53 |
| ANSE MONDON..... | 28 | Mahe | 54 |
| Praslin anchorages..... | 30 | Scuba diving..... | 58 |
| BAIE SAINTE ANNE..... | 30 | Victoria | 59 |
| ANSE VOLBERT..... | 31 | Seychellois cuisine..... | 60 |

Contacts



Base address :

SAILOE SEYCHELLES / Marine Cat Sey Eden Island Marina
PO BOX 811 Victoria – Mahé – Seychelles

For all requests before your cruise:

Sales department

Martin & Helene | France

Mobile and Whatsapp : +33 6 08 98 54 79 | +33 7 67 25 43 82

Stephanie | Seychelles

Mobile and Whatsapp : +248 252 70 77

Email: charter@sailoe.com



For all assistance during your cruise:

Technical Service on site

Base Manager:

Sylvain Lagalisse +248 2 818 403

Pontoon Managers :

Kamaridini Houmadi & Antoine: +248 2 837 175 | + 248 2 816 380



Customer Service on site:

Odette : +248 2 595 909

Emergency numbers



Police

Emergency number: +248 999

Mahé: Victoria, Revolution Avenue: +248 428 8000

La Digue, La Passe: +248 423 4251

Praslin Grand Anse, Baie Sainte-Anne: +248 423 3251

Hospitals

Emergencies: +248 151

Victoria Hospital, Mahé: +248 438 8000

Baie Sainte-Anne Hospital, Praslin: + 248 423 2333

La Passe Hospital, La Digue: +248 423 4255

Doctor

EUROMEDICAL CLINIC EDEN Eden Plaza (local 206) - Eden Island - Seychelles +248 4 324 999

Pharmacies

EDEN PHARMACY Eden Plaza - Eden Island Seychelles +248 4 324 999

D' Offay Pharmacy Baie Ste Anne Victoria Praslin, Seychelles +248 4 233 388

D' Offay Pharmacy La Passe Victoria, La Digue, Seychelles +248 2 516 747



Information and Operation of the base

The Marina : Eden Island

Eden Island is one of the most prestigious private residential marinas in the world.

Connected by a bridge to Mahé, you will find all the services you would expect in a marina : restaurants, café, supermarket, exchange office, clothing stores, fishing shop, shipchandler...





Access

Access by plane

The airport is located 10 minutes from the base by car. It is served by many airlines. From France, the companies that offer the most flights are Emirates, Qatar Airways, Ethiopian and AirFrance .

Transfers from the airport to our base

If you want us to organize the transfer from the airport to the marina, please contact our customer service at charter@sailoe.com

We can arrange a transfer

Access by road

From the airport, head southeast towards East Coast Road, follow the Providence Highway and take the Eden Bridge to Eden Island Marina.

Accommodation

It is possible to find various hotels directly on site :

- Eden Island Luxury Accommodation | www.edenislandaccommodation.com
- The Ridge Residence | <http://the-ridge-residence.seychelleshotel24.com/en>
- Eden Blue Hotel | <https://www.edenbleu.com/en/>
- JA Enchanted Waterfront Villas Seychelles | <https://www.jaresortshotels.com/seychelles/jaenchanted-waterfront>
- L'Escale Resort Marina & Spa | just in front of the marina | <https://lescaleresort.com>



Supply

There are several provisioning solutions for your Seychelles cruise.

It is possible to order directly online via our local partner [OquayShop Seychelles](#)

This solution is the most practical and remains economical.

It is possible to do your shopping directly at the Eden Island marina where you will find a SPAR in Eden Plaza shopcenter.

Otherwise, you will find a large supermarket in Victoria: **STC Hypermarket**.

It is also possible to go shopping directly at the **Victoria Market**: Sir Selwyn Selwyn Clarke

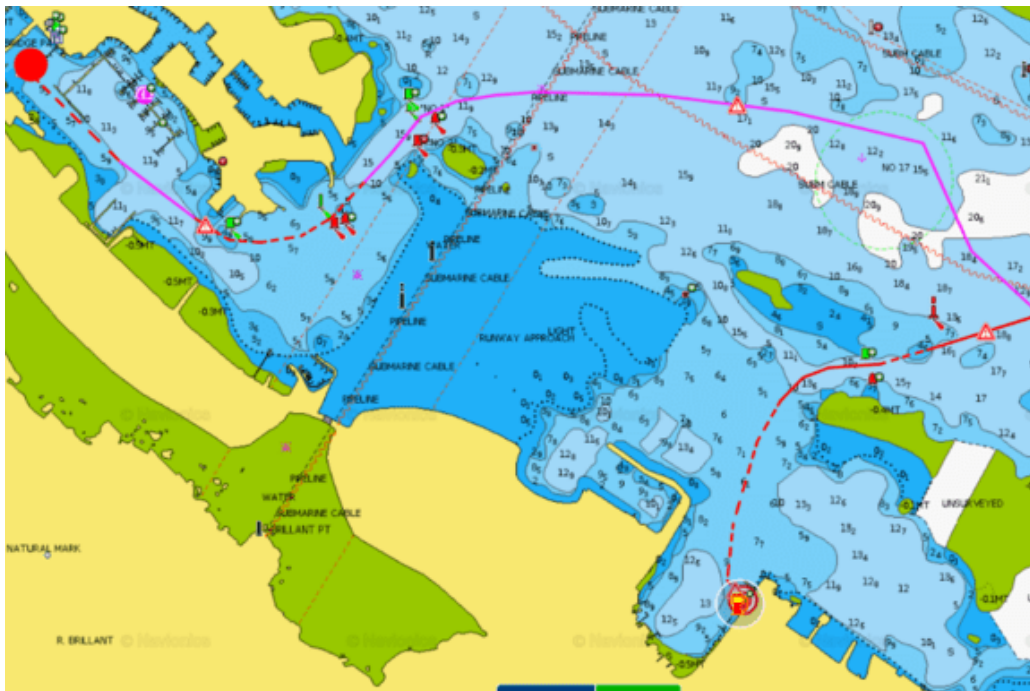
For the last two solutions, you will have to take a bus or a taxi to get there.

Fuel and pontoon

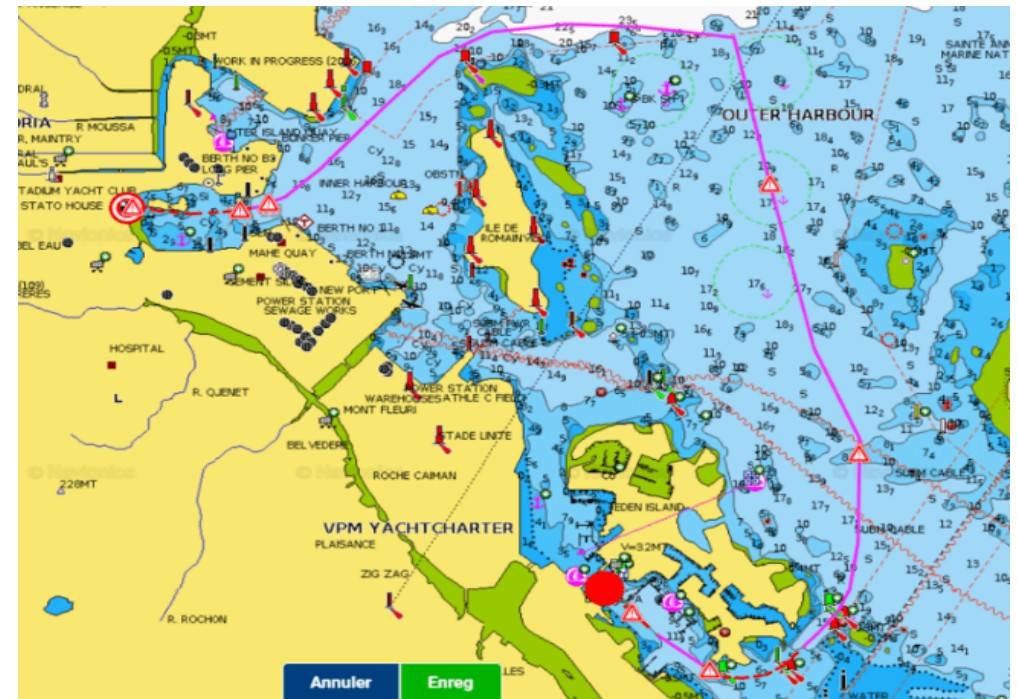
When renting a boat in the Seychelles, you must return the boat with a full tank.

Here are the two petrol stations closest to the marina

Marine Charter Association: 4 miles / 50 minutes from the marina.



Gasolio : 2.5 Miles / 30 minutes from the Marina



Procedures and formalities

Boarding procedures

2:00 p.m.

This is the time when the boat will be at your disposal. Reception, formalities and navigation instructions are provided on board. If the boat is ready before we will call you for an early departure. On your arrival, we can advise you on places to see, authorized moorings, beaches, bars, restaurants,

Formalities/deposit

The amount of the deposit, indicated on your rental contract, depends on the model of the boat. If this was not done online, it will be taken by bank imprint on the day of departure. Remember to check your payment limits with your bank.

Bedding and cleaning fees

We provide bed linen and towels (sheets, pillowcases, bath towels) but not beach towels. A return cleaning package is mandatory (price depending on the model of the boat). However, we ask you to return the boat to us in a correct state, tidy, dishes done and bins emptied.

Technical assistance and support

If you encounter technical problems that you cannot solve, do not hesitate to call Sylvain, Kamar or Antoine on (00248) 2816380 or (00248) 2837175 at any time. They will organize themselves to assist you as soon as possible.

Leave a message or send a whatsapp if the line is temporarily unreachable.

Rental with skipper

The skipper is responsible for the navigation: he assumes the technical control of the boat and will be held responsible for any damage that may be caused as part of his services. The lessee retains legal custody of the vessel and will be held liable for damage caused to the boat by its use.

In case of damage

Any damage must be reported as soon as possible to the base in order to notify the boat's insurer and to take the necessary measures. A sea report relating the facts must be drawn up by the skipper. In accordance with the terms of the contract signed by the tenant, we remind you that the latter – will assume the legal and regulatory obligations relating to the skipper, – certifies that he has the capacity to control or have the rented boat controlled.

Disembarkation procedure

09:00 on the last rental day. This is the imperative time at which the boat must be moored, stowed, ready for controls.

The return control

As soon as you arrive in port, a detailed technical inspection will be carried out with an examination of the varangles, keel bolts, engine mountings, saildrive, hull and rigging. An underwater check will be carried out to verify that there has been no bottoming.

Further information

The map and our guide will help you locate it, but other elements than its geographical location must be taken into account and should be able to help you leave it without danger, whatever the evolution of the weather situation.

The direction of the wind:

The weather is a valuable aid that should not be overlooked when choosing the right anchorage.

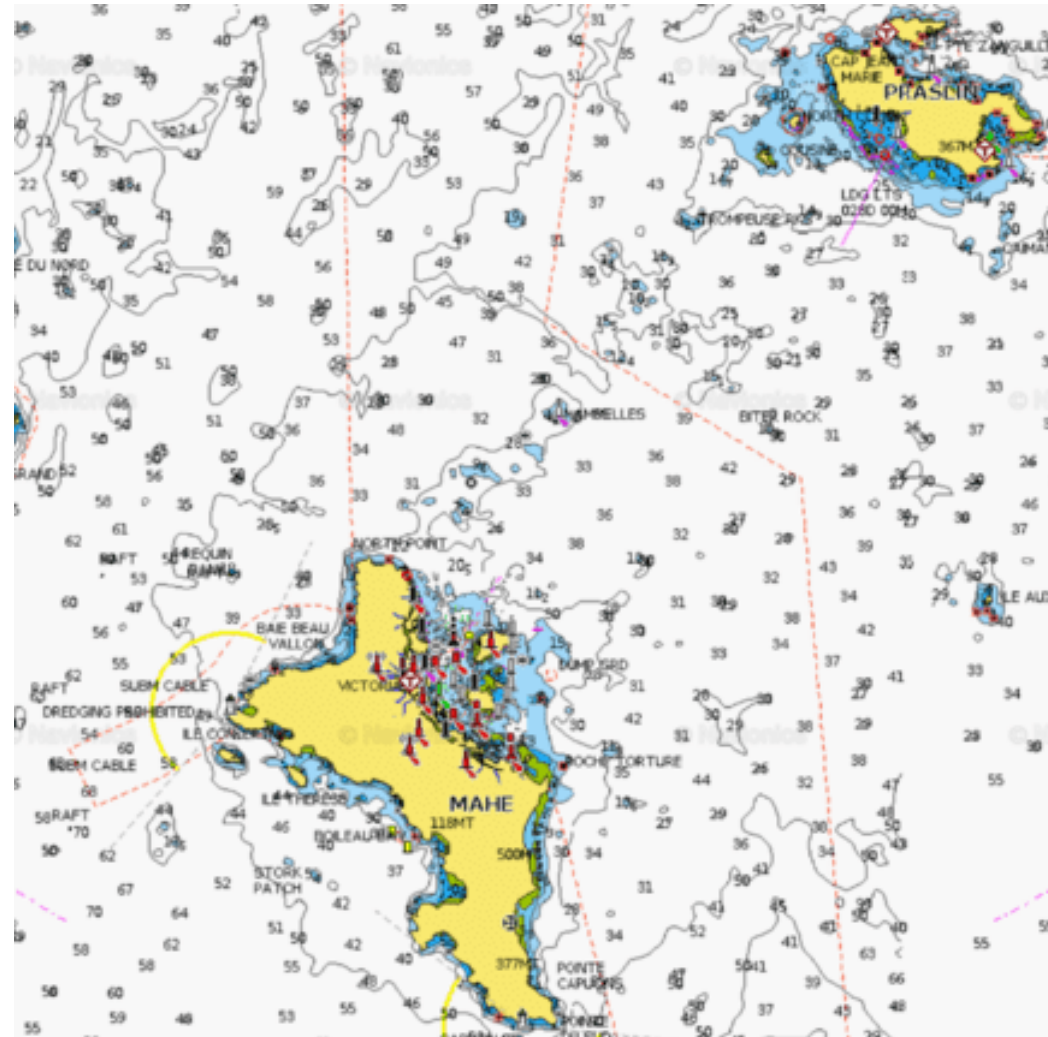
Depending on its wind resistance and its draft, each boat avoids in its own way, it is advisable to take the margin and establish a permanent watch.

Finally, be careful not to get too close to the mooring point of other boats in order to avoid tangling your anchor.

The navigation area

The main archipelago of the Seychelles around the island of Mahé, where the capital Victoria is located, extends into the Indian Ocean in the vicinity of the 5° parallel South and the 55° meridian East. Approximately one thousand kilometers in East of the coast of Africa and more precisely of Monbassa.

The area around the main island of Mahé is the starting point for all cruises and itself offers many superb anchorages, these granitic islands are all within a radius of less than 30 miles and we can easily discover them in a good week of navigation.



Landing fees

There are landing fees and schedules to respect in some islands.

The average budget is €120 per person per cruise week.

We advise you to provide Seychellois rupees for these taxes, but now they accept credit card payments as well.

A new government tax is now compulsory : Tourism Environmental Sustainability Levy.

It has to be paid on spot at base : 100 SRC per day per pax (from 12 years old)

Mahé Sainte Anne Marine Park

Every day from 8:30 a.m. to 5 p.m.

10 € per person per day + 10 € for the boat in case of night anchorage.

Bay Ternay Marine National Park

Every day from 8:30 a.m. to 5 p.m.

€10 per person per day / After 5 p.m., €10 for anchoring the boat.

Coco Island Marine Park

Every day from 8:30 a.m. to 5 p.m. / €10 per person per day.

Cousin Island

Open Tuesday to Friday.

€25 per person / Disembarkation between 9 am and 10 am for guided tours.

Big sister (private island)

Monday to Friday, 10:30 a.m. to 3 p.m.

€23 per person. Closed Saturday and Sunday.

The dam

No tax. Estate plantation and access to Source d'Argent cove, €4 per person.

Silhouette

Every day, 20 € per person. Apply before leaving at the IDC office

Laughed at

Sunday, Wednesday and Thursday €30 per person / Disembarkation before 10 a.m. for guided tours.

Curieuse and Saint-Pierre islet

Every day, 10 € per person (visit of curious river and authorization for snorkelling in Saint-Pierre).

Praslin

No landing tax. Visit of the Vallée de Mai every day, €15 per person.

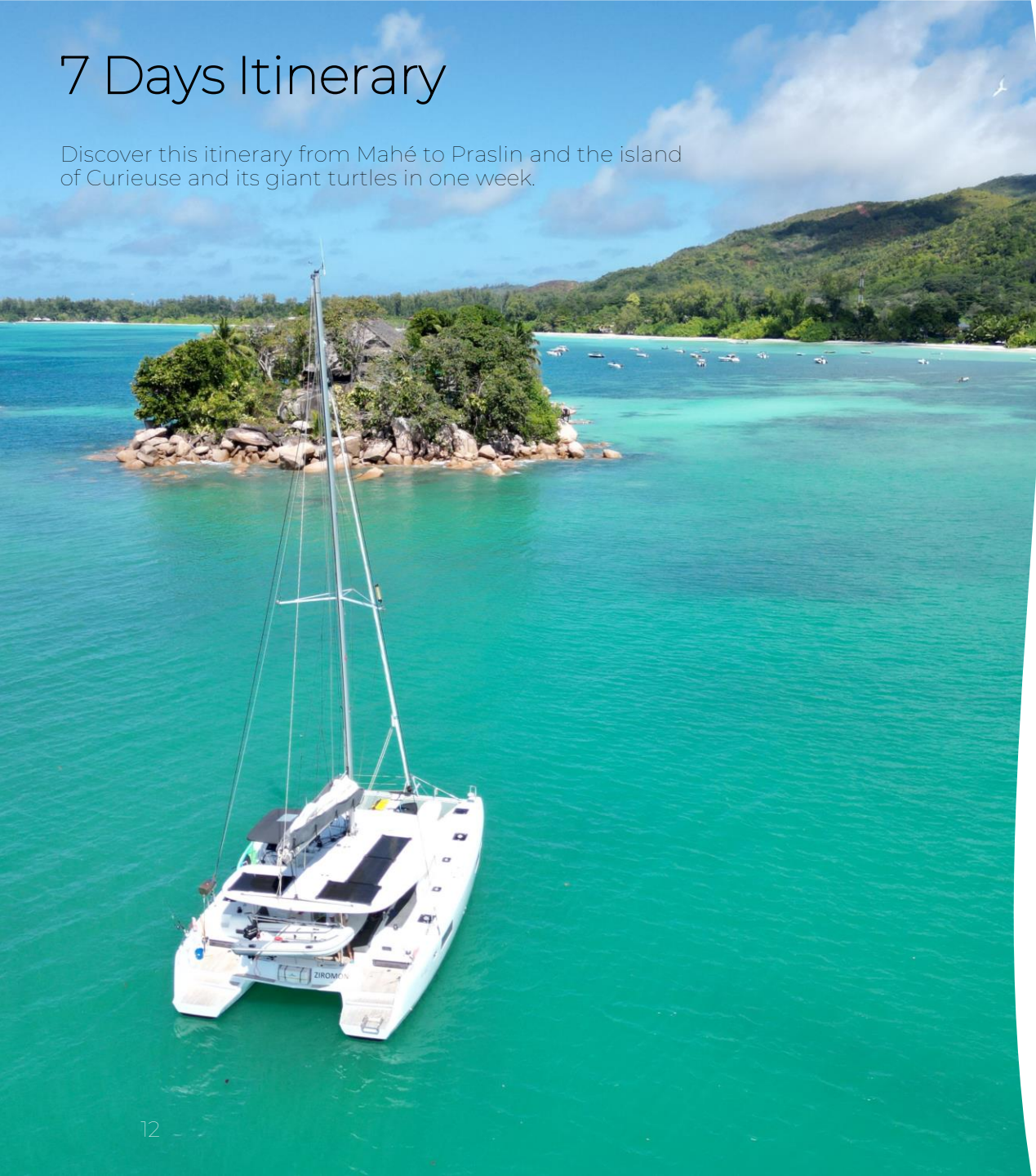
Bird

Every day, 40 € per person.

The North Island, Little Sister, Marianne, Denis, and Frégate are private and off-limits to the public.

7 Days Itinerary

Discover this itinerary from Mahé to Praslin and the island of Curieuse and its giant turtles in one week.



Day 1: Eden Island

Day 2: Eden Island – Beau Vallon

Beau Vallon is one of the most popular sites for locals and visitors. Its huge bay, bordered by a three- kilometre-long semi-circular beach, offers an idyllic setting for swimmers and sports enthusiasts.

Day 3: Beau Vallon – Praslin (Anze Lazio)

The incredible combination of turquoise blue water, fine sand, picturesque palm trees and impressive granite rocks make Anse Lazio one of the most beautiful beaches in the world. This postcard beach offers options for everyone, whether swimming, snorkeling, sunbathing or photography.

Day 4: Praslin (Anze Lazio) – Curieuse Island – Praslin (Anse Volbert)

Located north of Praslin, the small island of Curieuse is best known for its large population of giant tortoises, some of which are over 200 years old! With its granite relief, the territory of barely 2 km² offers a total change of scenery.

Day 5: Praslin (Anse Volbert) – La Digue

La Digue has everything of a paradise. This beautiful island is located 6 km southeast of Praslin. It can be reached in 15 minutes by boat.

Its proportions are modest (5 km long by 3 wide), but they present all the beauties of the Seychelles archipelago. Beaches surrounded by granite rocks, hills covered with coconut palms, lataniers and takamakass, small roads frequented by bicycles or ox carts...

Day 6: La Digue – Ste Anne Marine Park – Eden Island

5 km from the coast of Mahé, is the oldest marine reserve in the Seychelles, named for its largest island Sainte Anne. Besides this island and the surrounding lagoon, the park is home to Moyenne Island, Round Island, Long Island, Cerf Island, Hidden Island, as well as deep ocean waters. In total, the park covers 14.43 km², and consists mainly of coral reefs.

Day 7: Eden Island Marina

15 days itinerary

Over a fortnight, you have the opportunity to visit the most beautiful anchorages in the Seychelles via Ile Curieuse, Silhouette, Praslin, La Digue...

Day 1: Eden Island

Day 2: Eden Island – Beau Vallon

Beau Vallon is one of the most popular sites for locals and visitors. Its huge bay, bordered by a three- kilometre-long semi-circular beach, offers an idyllic setting for swimmers and sports enthusiasts.

Day 3: Beau Vallon – Praslin (Anze Lazio)

The incredible combination of turquoise blue water, fine sand, picturesque palm trees and impressive granite rocks make Anse Lazio one of the most beautiful beaches in the world. This postcard beach offers options for everyone, whether swimming, snorkeling, sunbathing or photography.

Day 4: Praslin (Anze Lazio) – Curieuse Island – Praslin (Anse Volbert)

Located north of Praslin, the small island of Curieuse is best known for its large population of giant tortoises, some of which are over 200 years old! With its granite relief, the territory of barely 2 km² offers a total change of scenery.

Day 5: Praslin (Anse Volbert) – La Digue

La Digue has everything of a paradise. This beautiful island is located 6 km southeast of Praslin. It can be reached in 15 minutes by boat.

Its proportions are modest (5 km long by 3 wide), but they present all the beauties of the Seychelles archipelago. Beaches surrounded by granite rocks, hills covered with coconut palms, lataniers and takamakass, small roads frequented by bicycles or ox carts...





Day 6: La Digue – Big Sister Island

Located 6km north of La Digue and near the Félicité and Coco islands, Grande Soeur island is adorned with two fine white sand beaches plunging into magnificent turquoise waters, the extravagant beauty of Grande Soeur island is dazzling!

Protected by a coral reef, the seabed there is exceptional. Along the reefs, you will meet sea turtles and tropical fish with shimmering colors in crystal clear and luminous water.

Day 7: Big Sister Island – Praslin (Baie Ste Anne)

Day 8: Praslin (Baie Ste Anne) – Silhouette Island (Anse Mondon)

It is the Seychellois paradise for diving and snorkelling , a real life-size aquarium which is said to have more than 150 different species of fish.

Day 9: Silhouette Island (Anse Mondon) – Mahé (AnseMajor)

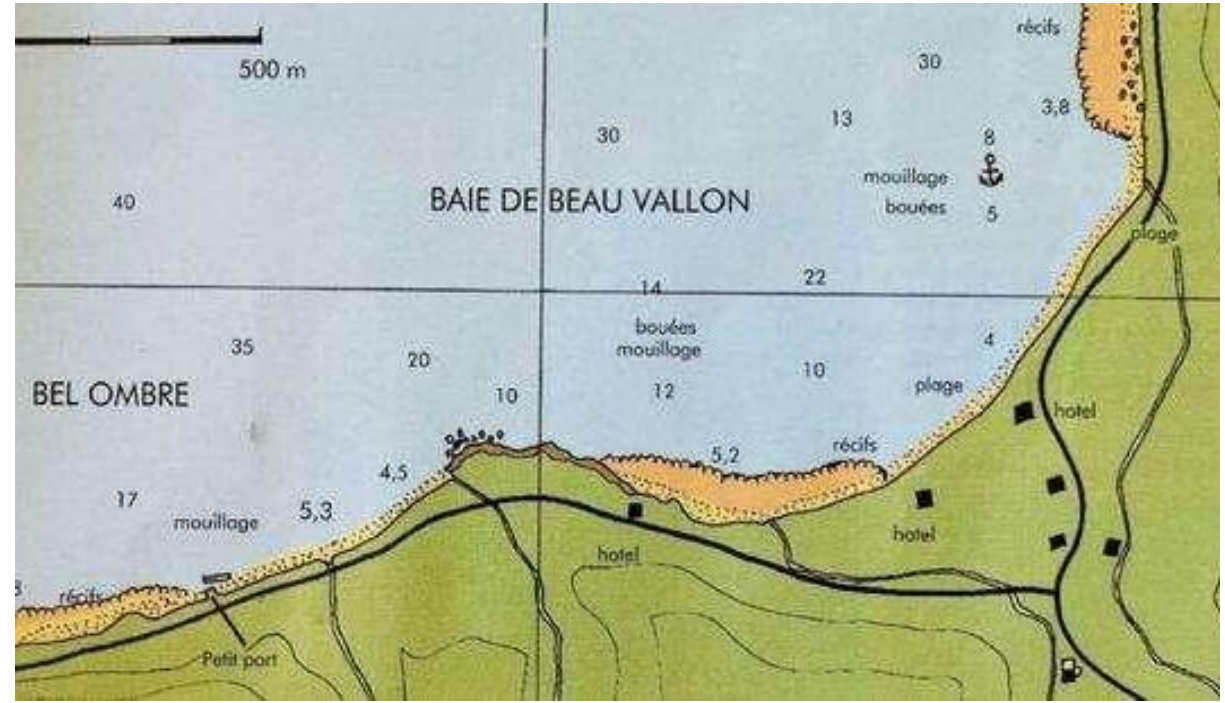
Day 10: Mahé (Anse Major) –Mahé (Baie Ternay)

Day 11: Mahé (Baie Ternay) – Mahé (Petite Anse)

Day 12: Mahé (Petite Anse) – Ste Anne Marine Park – Eden Island

5 km from the coast of Mahé, is the oldest marine reserve in the Seychelles, named for its largest island Sainte Anne. Besides this island and the surrounding lagoon, the park is home to Moyenne Island, Round Island, Long Island, Cerf Island, Hidden Island, as well as deep ocean waters. In total, the park covers 14.43 km², and consists mainly of coral reefs.

Day 13: Eden Island Marina



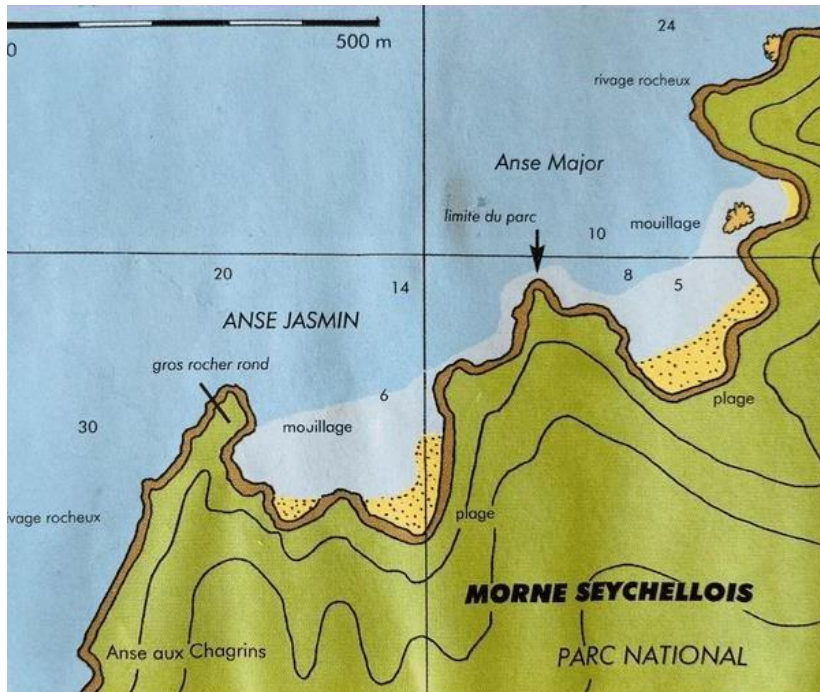
Mahé moorings

BEAUVALLON

4°34'35-55°25'80

Located in the northwest of Mahé, Beau Vallon beach is the longest and most popular on the island. It is the ideal place to rest with the family or try out all kinds of aquatic activities.

Bordered by alleys of palm trees and other trees, Beau Vallon and its kilometers long has the local reputation of being one of the most beautiful beaches in the Seychelles. Imagine a long ribbon of white sand, a translucent and shallow sea and a breathtaking seabed, particularly suitable for snorkeling...



ANSE MAJOR AND ANSE JASMIN

4°37'21-55°23'05

This region is classified as a natural park. Anse Major a real postcard. With its superb white sand beach and turquoise water. The anchorage is recommended by SE winds.

Right next to it you will find Anse Jasmin made up of three small beaches, each as magnificent as the other. Its seabed is superb. Two superb anchorages, which only accept very few boats,

TERNAY BAY

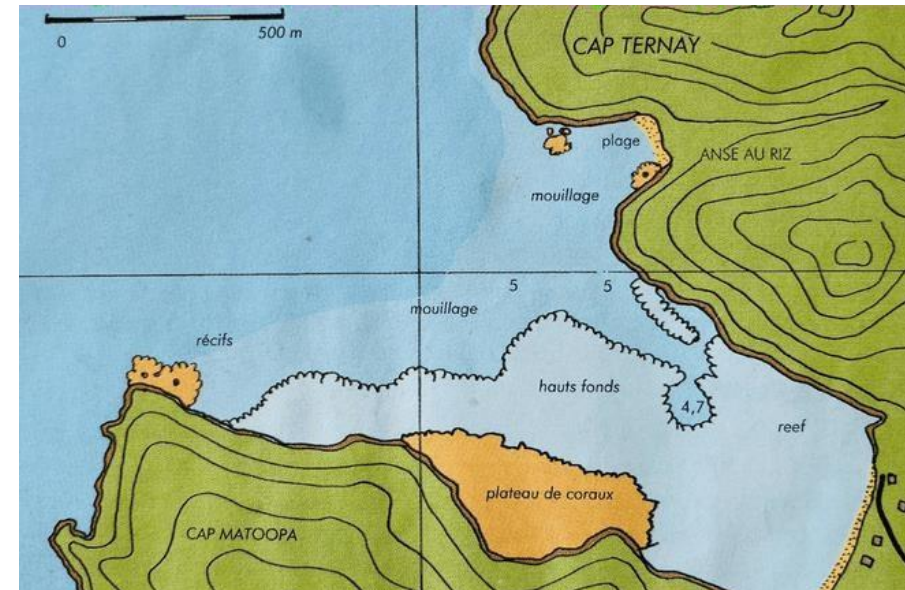
4°38'14-55°22'41

This bay offers a magnificent anchorage, with these splendid bottoms and its superb white sand beach.

Anchoring is safe in SE winds. The bay is included in the Morne Seychellois natural park and ANCHORING IS PROHIBITED.

You have to moor at one of the three buoys, property of the Marine Park.

NIGHT ANCHORAGE IS PROHIBITED LESS THAN 600m from the main beach.

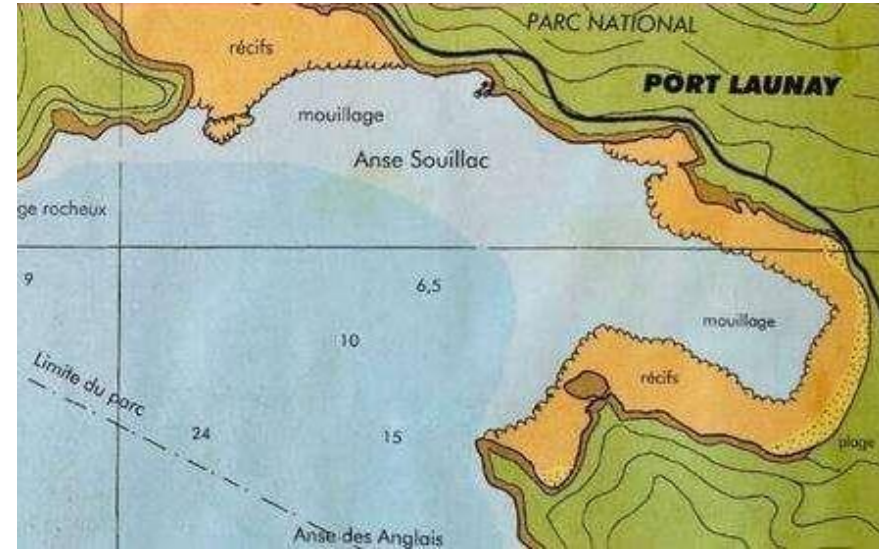


An aerial photograph of a tropical bay. The water is a vibrant turquoise color, transitioning to a deeper blue towards the bottom left. A small white boat is visible in the lower-left quadrant of the water. The bay is surrounded by lush green vegetation, including palm trees and dense foliage. A small sandy beach is visible at the top of the bay, with some rocks scattered along the shore. The overall scene is serene and idyllic.

Sailing.

Traveling.

Sharing.



PORT LAUNAY
4°39'00-55°23'85

This small bay is an excellent shelter from all prevailing winds. An exception on the island of Mahé.
The bottom of the cove is bordered by a long and magnificent beach of white sand and shaded by takamakas.
Anchoring is simple because the sandy bottoms are clear. There is an mooring fee of 50 rupees per person and 5 rupees for the boat.

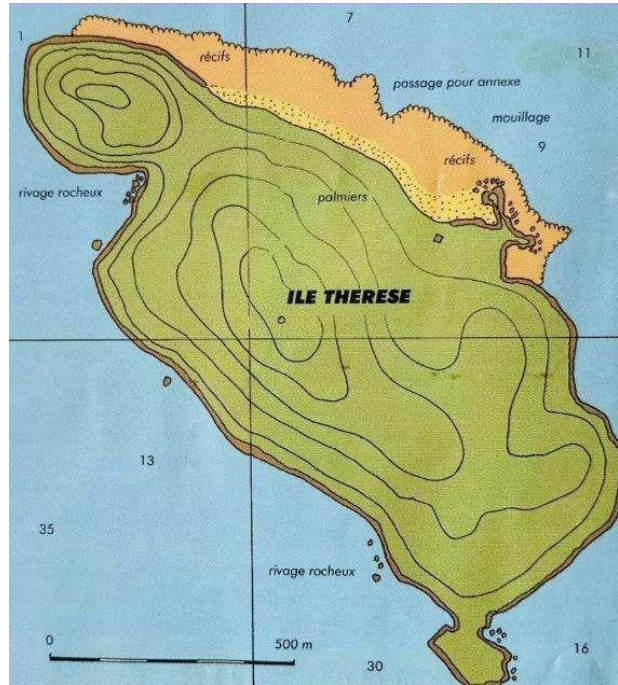
THERESSE ISLAND

4°40'10"-55°24'35

This island is bordered by one of the most beautiful wild beaches of Mahé,

Boats can anchor near the pass at a depth of 8 to 9 meters, in crystal clear water.

The site is ideal for diving.



GRAND ANSE

Grand'anse to the East 4°40'75-55°27'00

Grand'anse to the West 4°40'50-55°26'60

This magnificent anchorage is only accessible during the day. The bay has beautiful flat sandy bottoms and no rocks to be feared.

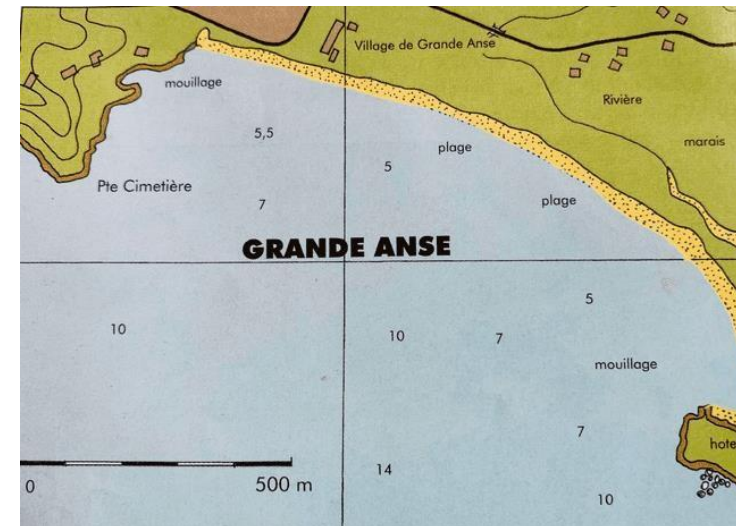
Widely open to the south, it offers a superb white sand beach.

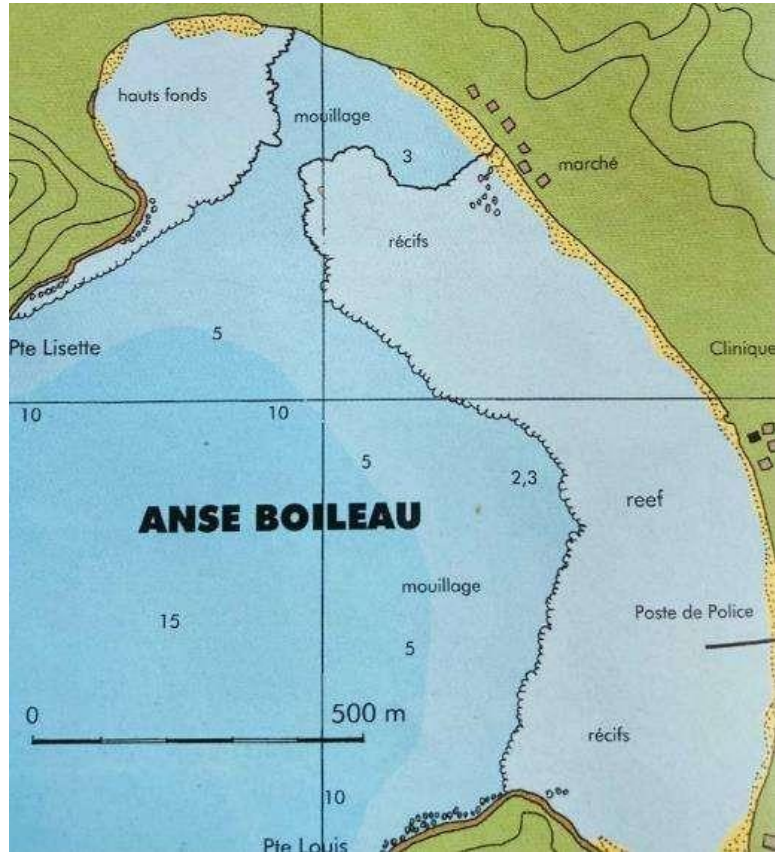
But dinghy landings are difficult there because of the swells.

After a long period of rain, just behind the beach, a

Freshwater lagoon forms where it is possible to swim.

A very nice experience.





ANSE BOILEAU
4°42'60-55°26'00

Here is another day anchorage. It is possible to anchor in the first area before the reefs and access to the beach can be done by dinghy but be careful it is not easy because there are a lot of rollers.

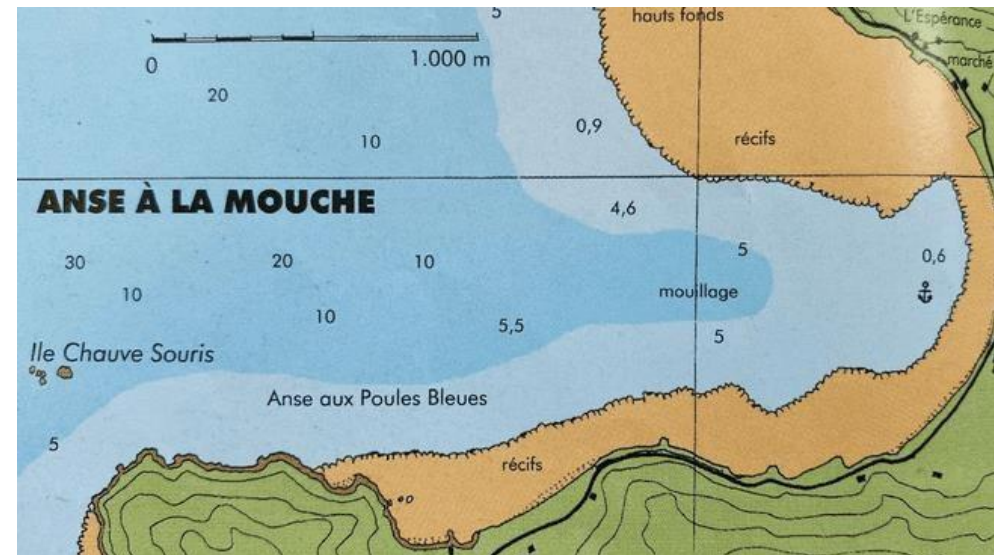
A magnificent diving spot is to be done on the reefs. It is best to go to Anse La Mouche for a night anchorage,

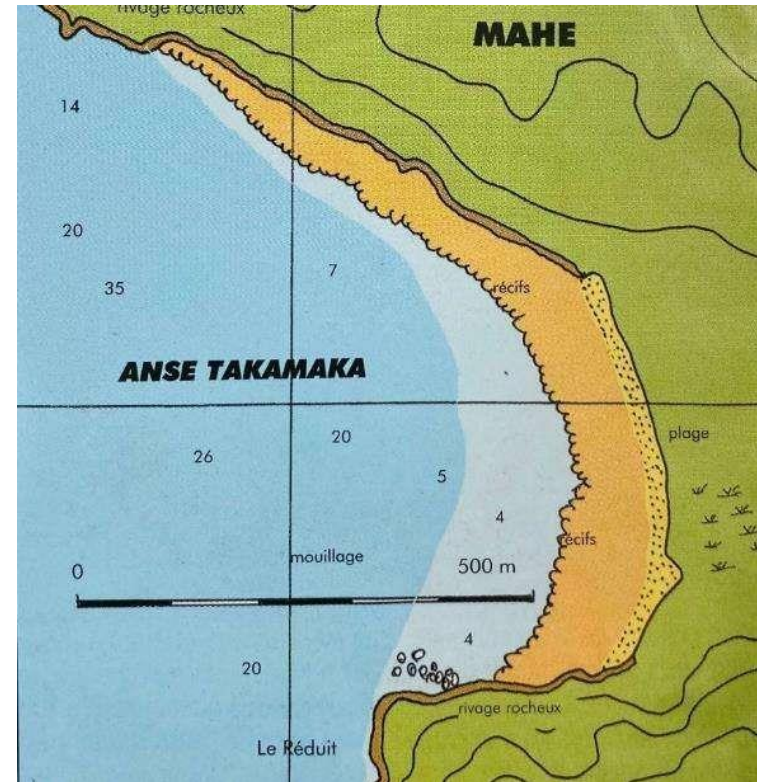
ANSE LA MOUCHE

4°44'15-55°29'25

This bay is the largest on the west coast of Mahé and offers real protection from SE winds. It is a safe anchorage to spend the night. This bay offers several beautiful fine sandy beaches and seabed between sand and corals.

At open sea, Anse la Mouche offers a magnificent body of water with crystal clear waters.





ANSE TAKAMAKA
4°46'50-55°29'55

A true little corner of paradise bordered by Takamaka, offering exceptional daytime anchorage.

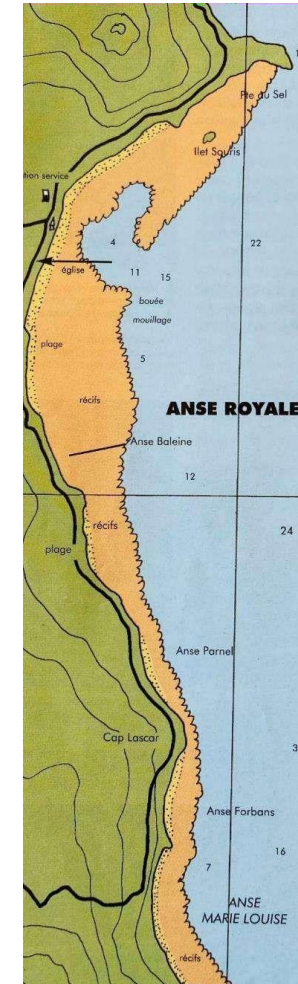
Its fine sandy beach, its turquoise waters and its palm trees which provide shade for a perfect day of relaxation, are the assets of this place. This bay is accessible by calm sea. It is one of the most beautiful sites on Mahé.

ANSE ROYALE
4°44'2"-55°32'6"

This superb bay is protected by a coral reef and leads to this large white sand beach, it offers excellent conditions for swimming and diving.

South of Anse Royale, a small church can be seen next to the beach, which adds a local touch. Anse Royale is one of the most famous and well-known beaches on Mahé. It is recommended to arrive during the day because the anchorage seems gigantic but this is not the case because of the presence of many coral heads.

In addition, the anchorage area remains limited around the marked channel by a small yellow buoy.

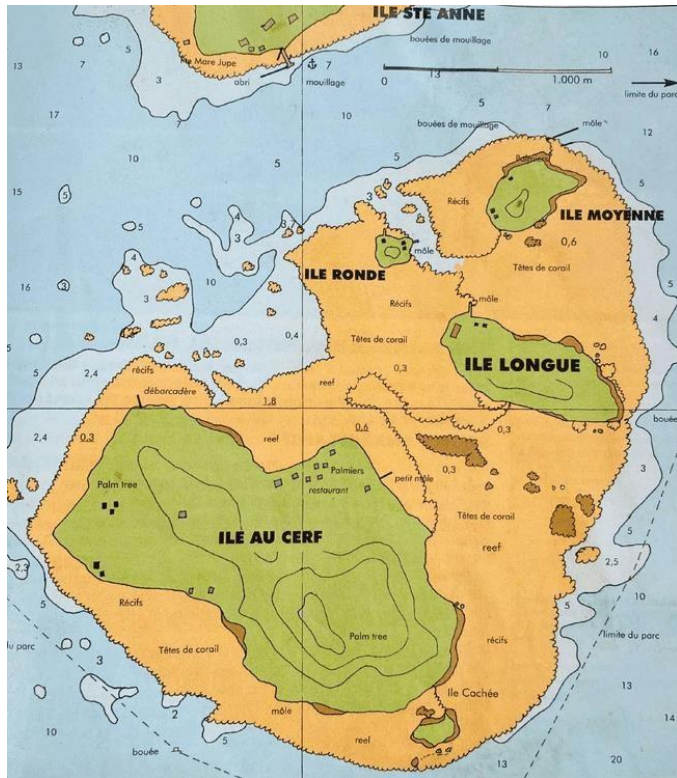


SAINTE ANNE MARINE PARK

4°38'77-55°30'30

Sainte Anne Marine Park is located just minutes from our Eden Island base. It is the ideal anchorage for your first night in the Seychelles.

It is the oldest marine reserve in the Seychelles, named for its largest island Sainte Anne. The park is made up of several islands. There is Île Moyenne, Île Ronde, Long Island, Île Cerf, Île Cachée, offering you several anchorages (paying) and an exceptional diving area. It is possible in almost all conditions to find a sheltered anchorage.



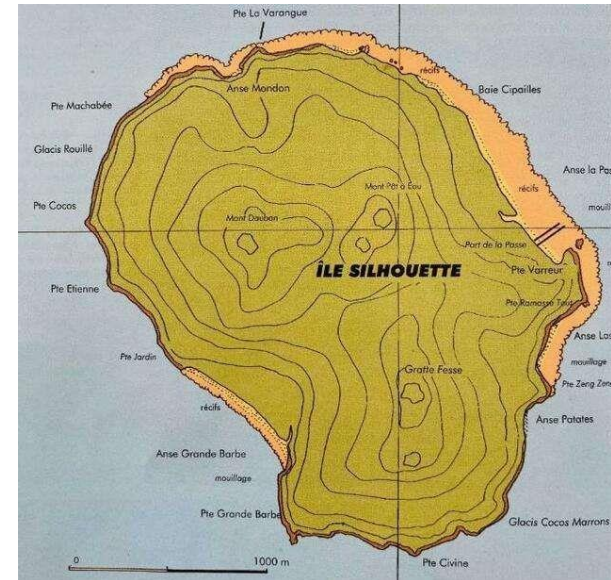
Silhouette Island

THE PORT OF THE PASS

4°28'80-55°15'40

This is the main landing point in Silhouette Island.
 Pointe Varreur , which is extended by an outcrop of rock resembling an islet, sporting a cross, is protected from the SE winds by two parallel groynes.

The anchorage is done on hard sand bottoms. The place is very limited in the port and one can only shelter there by OBTAINING THE AUTHORIZATION OF THE MASTER OF PORT. The plan is calm.

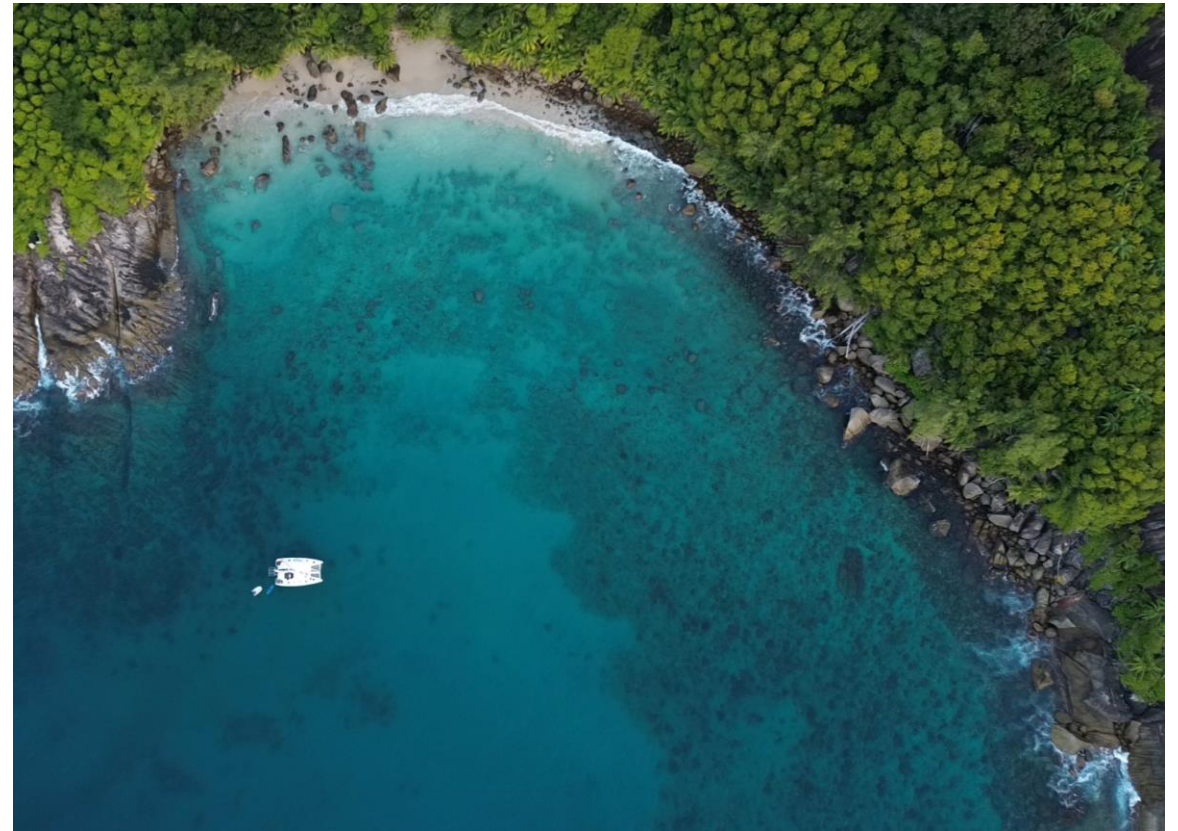
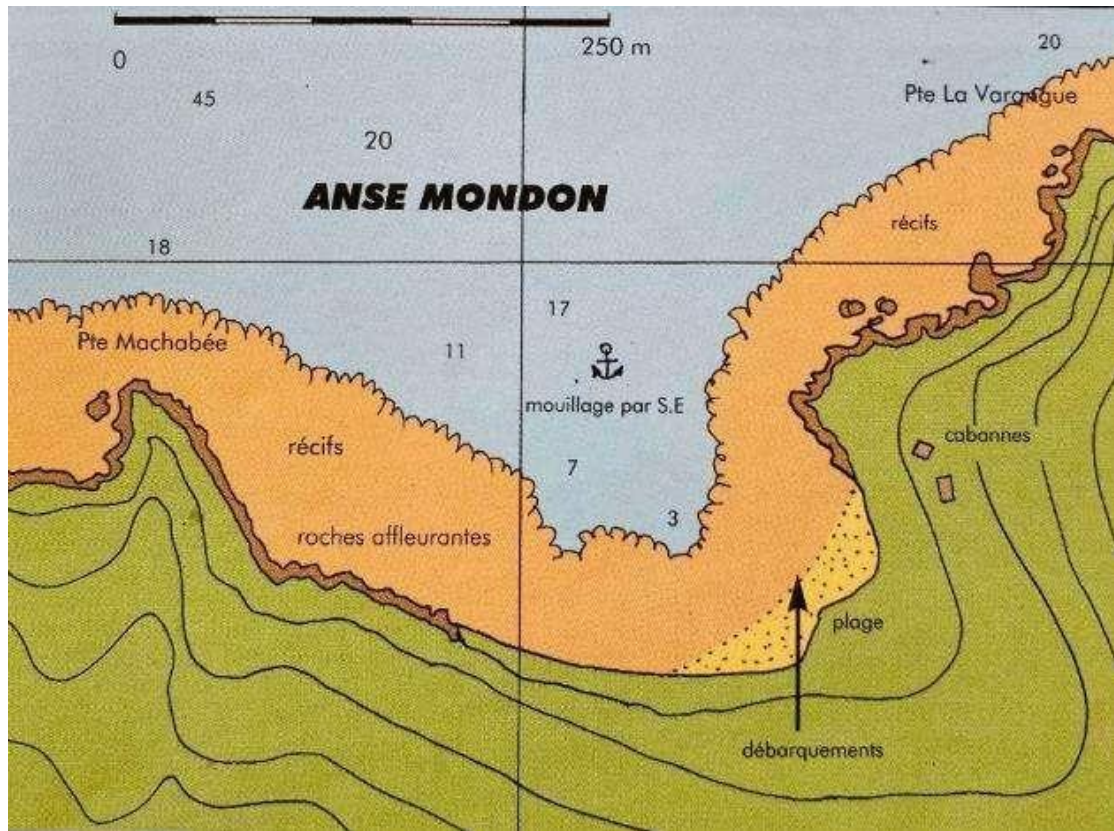


ANSE MONDON
4°27'70"-55°13'25"

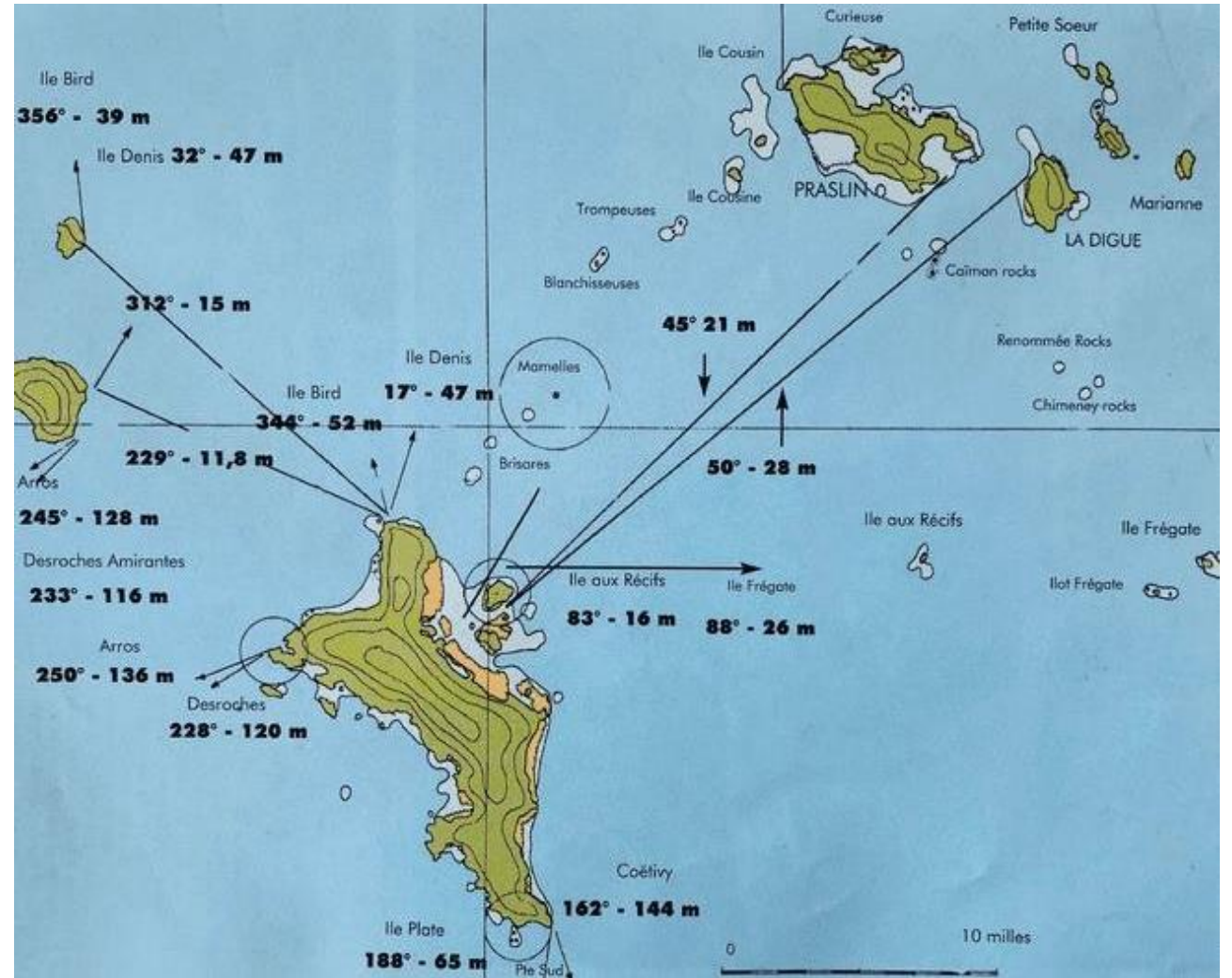
Anse Mondon is the only real safe anchorage with the port of the pass.

This small cove offers a beautiful beach and translucent water where many fish are visible while walking along the beach and snorkeling.

A little corner of paradise.

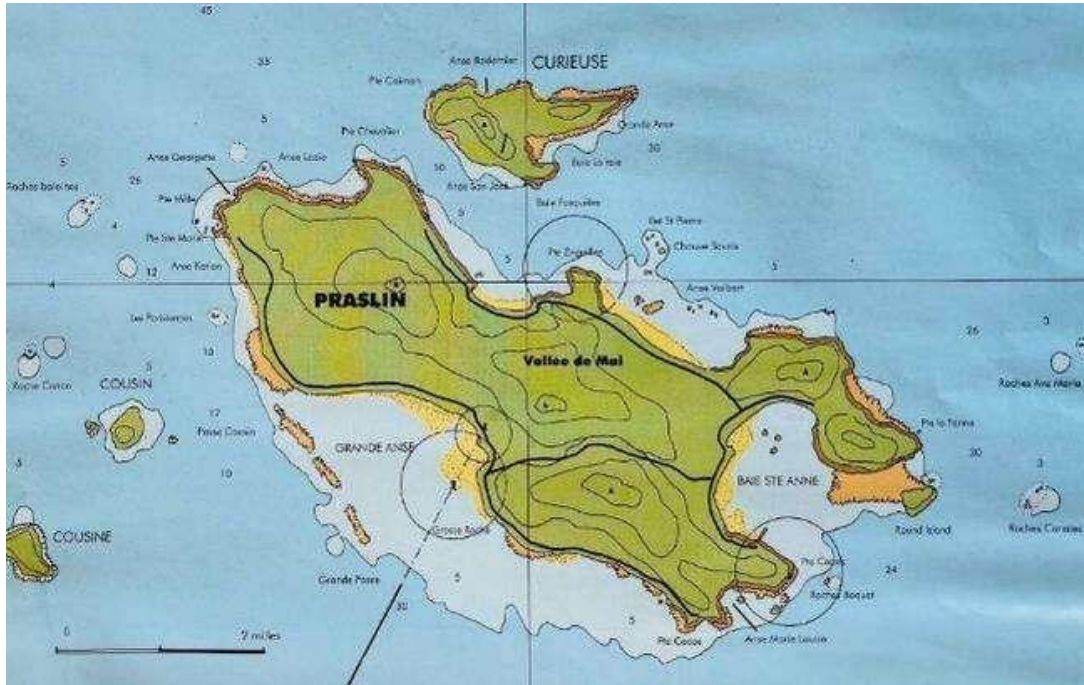


MAHÉ TO PRASLIN

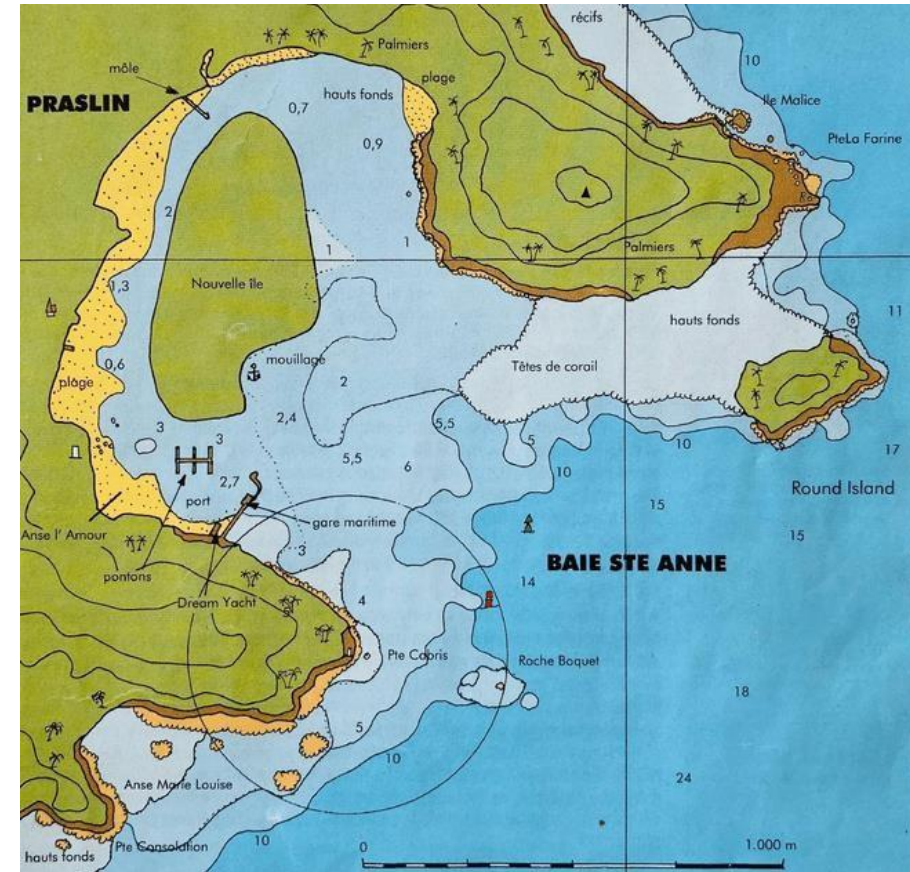


Praslin anchorages

12 km long and 5 km wide, Praslin is the second largest island in the Seychelles. A walk in the Vallée de Mai is truly enchanting. The indented shoreline of Praslin offers many safe and comfortable anchorages.



BAIE SAINTE ANNE



This vast bay is the main anchorage of the island. Ideal for filling up with water and refueling to go back to sea and discover the superb beaches of Praslin. The anchorage is done on the buoys at the entrance of the small port. It is possible to make water, on the pontoons of our confers DYC, just at the entrance of the port. This service is chargeable.

ANSE VOLBERT

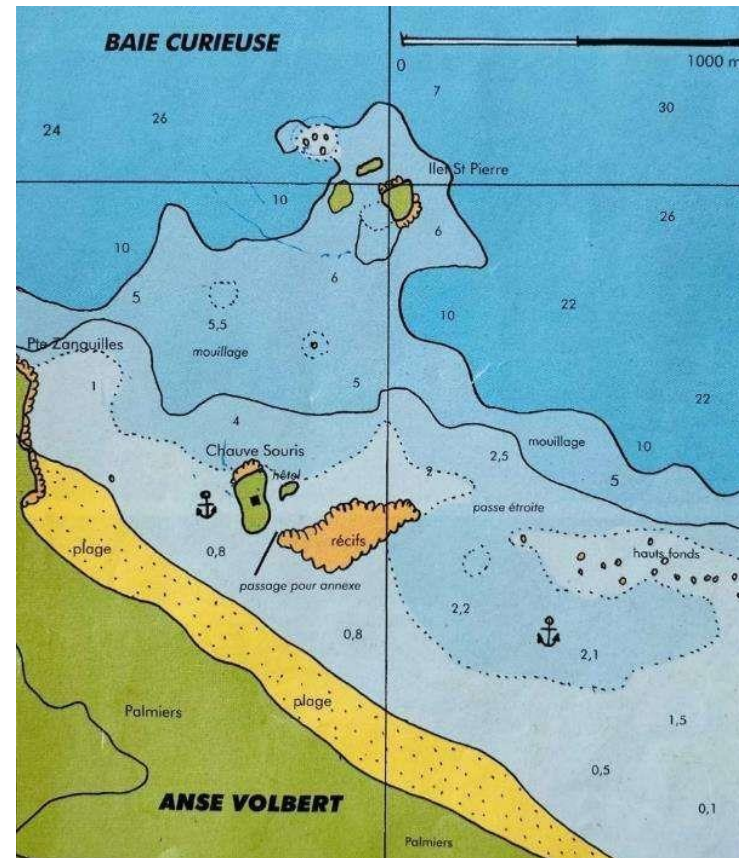
4°18'23-55°44'43

(Bauve-Souris anchorage)

This cove is bordered by a magnificent 2.8 km long fine sandy beach, but the very gentle slope means that you have to anchor at a distance.

Ideal for relaxation and idleness.

A road is located just behind the beach and gives access to several shops and restaurants.



SAINT-PIERRE ISLAND
4°18'00-55°45'00

An idyllic diving spot. This small islet offers a giant aquarium where mask and snorkel diving is ideal.

These sea beds are full of multicolored fish in crystal clear water. Anchorage, even during the day, is chargeable.

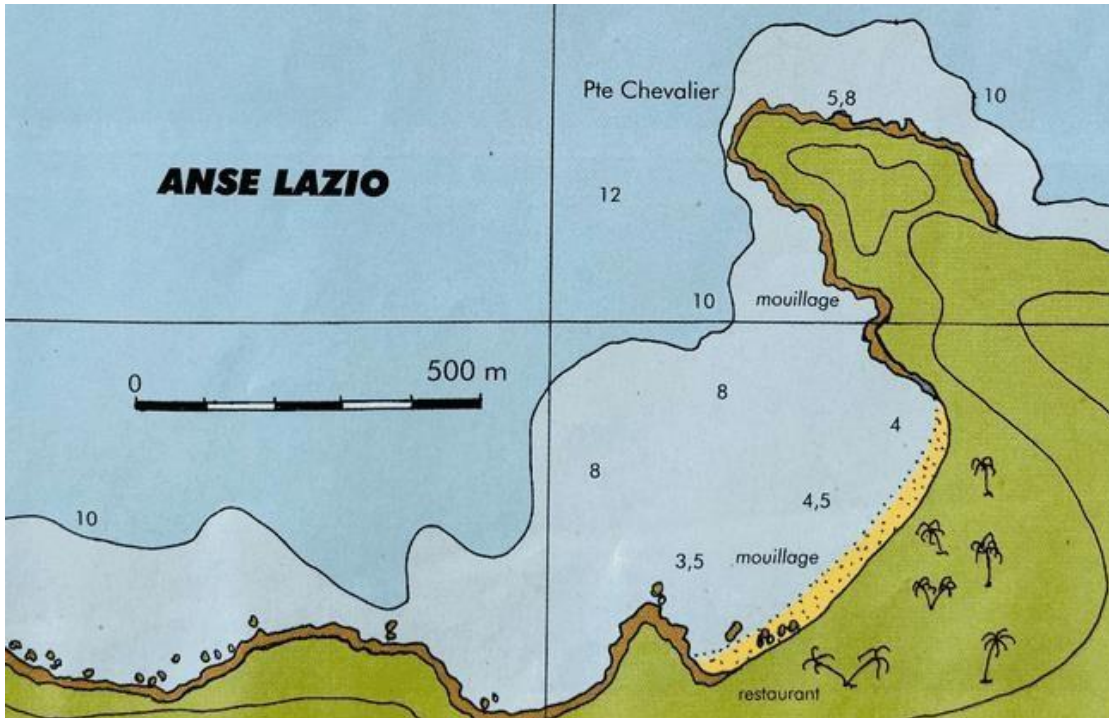




ANSE LAZIO

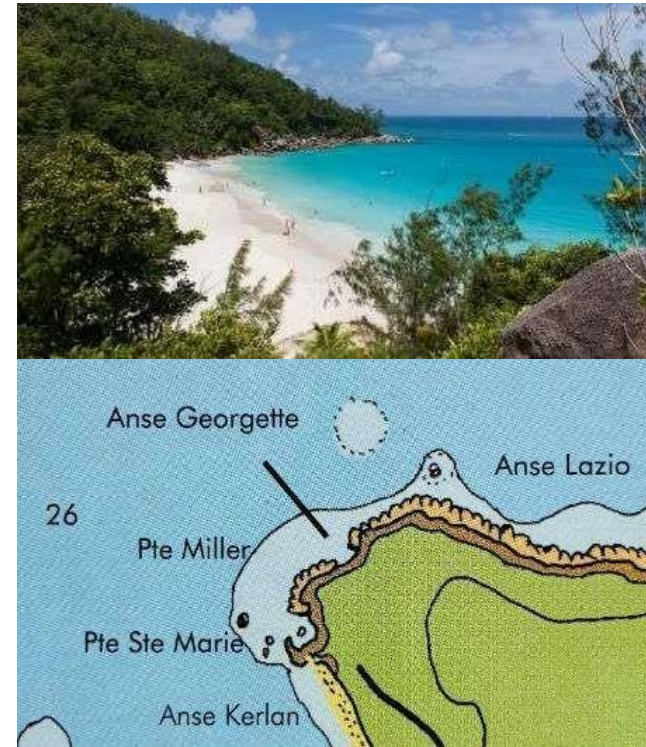
4°17'27"-55°42'06"

This postcard beach is one of the most beautiful beaches in the world. The funds go up in soft slope and one has only the embarrassment of the choice for the anchorage. The shelter is perfect in SE winds. A magnificent setting of white sand, tall coconut trees and turquoise water.



ANSE GORGETTE

Anse Georgette is an idyllic bay with its sumptuous white sand beach, its turquoise water and its rich seabed. A small corner of paradise still very wild. The anchorage is 4 or 5 meters from the beach.



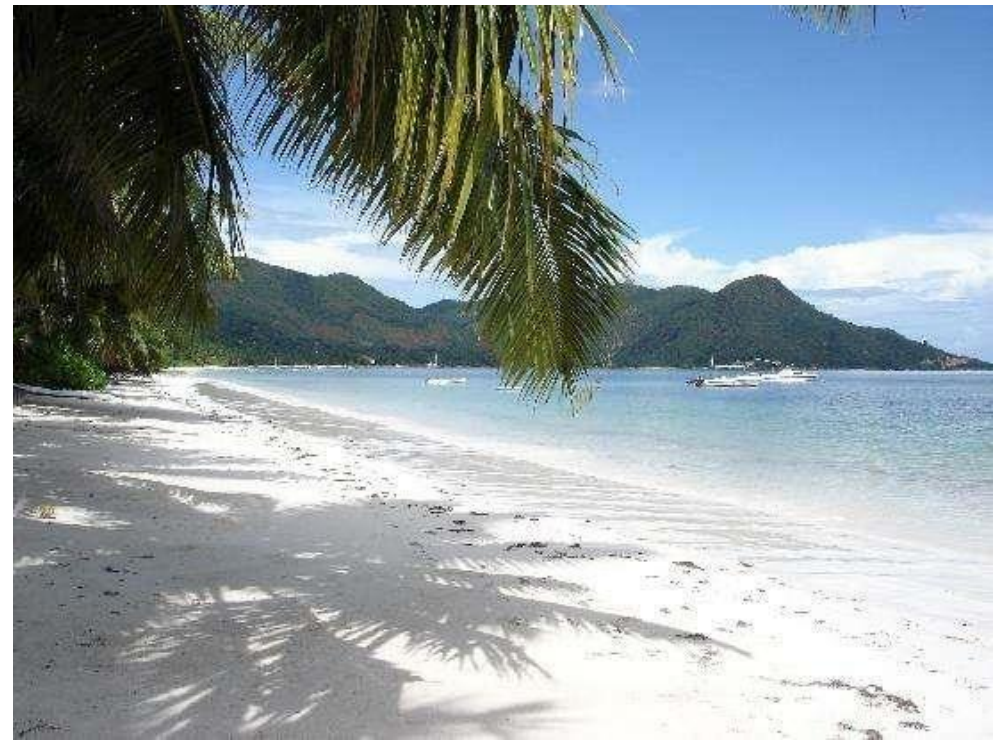
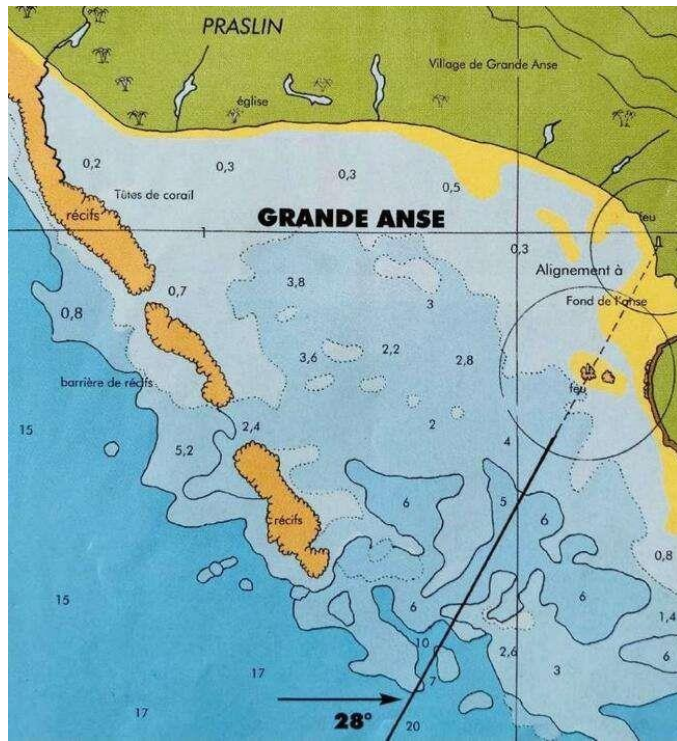
GRANDE ANSE

SW of Praslin

The bay of Grande Anse is a vast stretch of turquoise water, bordered by a superb beach that still looks wild.

It is closed by a reef barrier but anchorage is possible and sheltered there.

BE CAREFUL of swimming, which can be dangerous in the event of a strong swell



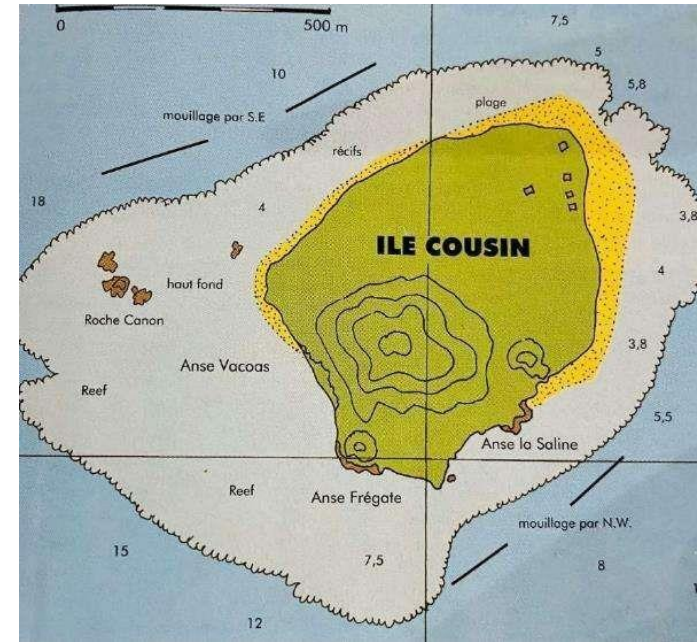
MAY VALLEY and FOND FERDINAND

Vallée de Mai is located in the heart of the Praslin National Park in the center of the island. It is an exceptional plant sanctuary, listed as a UNESCO World Heritage Site.

There grows several palm trees endemic to the Seychelles, including the "sea coconut tree". The fruit of this coconut tree, which only grows on the female coconut tree, is called "coco de mer", also nicknamed "coco-butt" because of its suggestive shape.

It's the only place in the world where coco de mer grows wild. Visit the Vallée de Mai every day, €15 per person.

It is also possible to visit **Fond Ferdinand** which is bigger than May Valley and less expensive because there is a free guide who will explain you all the different trees and fruits.



COUSIN ISLAND

4°19'90-55°39'90 (Anse de la Saline anchorage)

Cousin Island unfortunately does not offer much shelter due to its round shape. However this small island is a real jewel. Landings are preferably made on the north beach. A buoy is moored to the north and **MUST BE USED FOR MOORING**.

A tax of 25€ will be asked to disembark. Its large beach of fine sand and crystal clear water make it a splendid place.



CURIOUS ISLAND

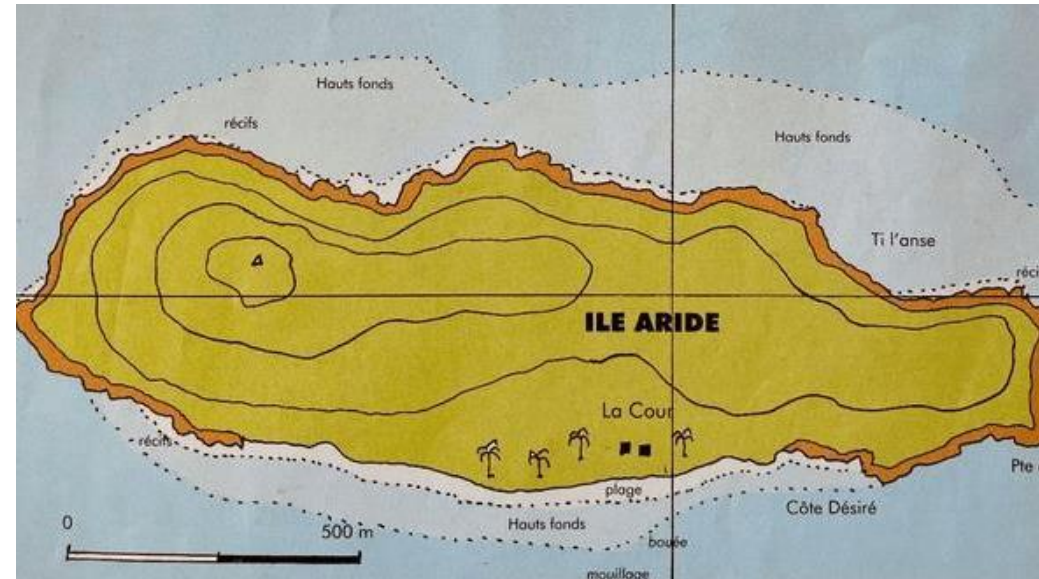
4°17'05-55°44'00

(La Raie Bay anchorage) 4°17'20-55°43'30
 (San José anchorage)

Curieuse Island is a protected site whose lush nature makes it a real little paradise! The main anchorage is located in the Baie de la Raie on the SE coast.

On land you can stroll through the mangroves and finish your stroll by the giant tortoise park.

For Anse Jan José anchorage is PROHIBITED near the beach. It is advisable to moor at 3 small buoys to preserve the bottom. The beach is beautiful, and the seabed is superb.



ARIDE ISLAND

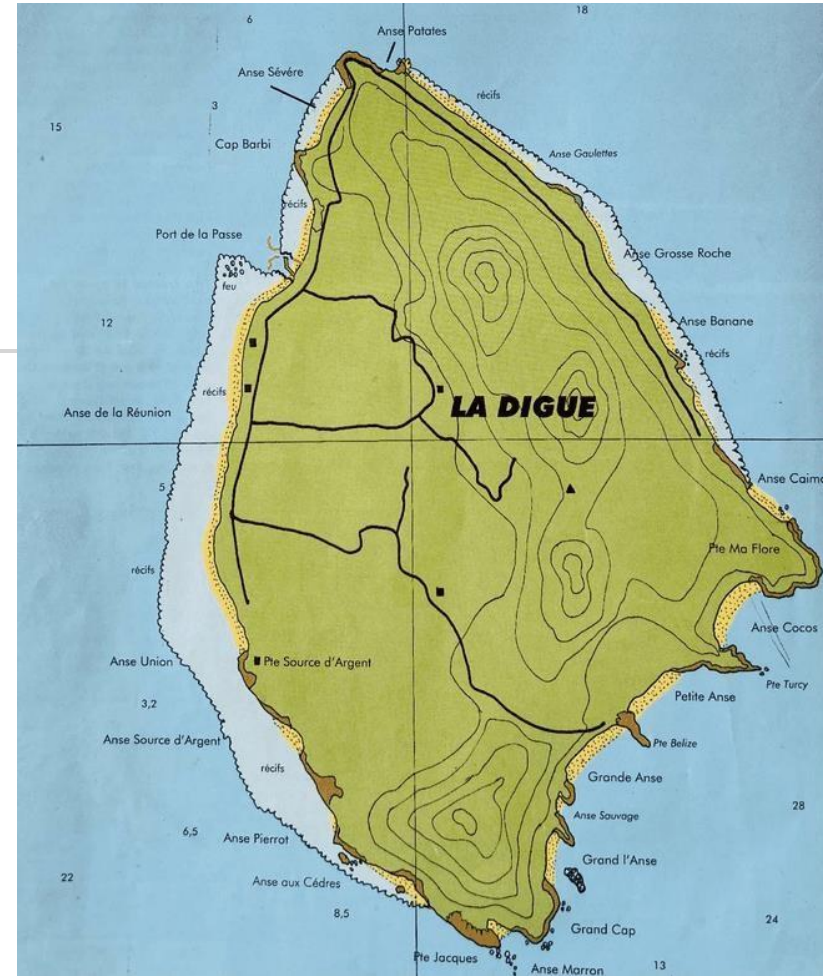
4'8 miles NW of Praslin

The small island is a natural park and is the northern most of the granitic islands of the Seychelles.

It floats on the ocean like an untouched paradise.

Aride is the Seychellois biodiversity sanctuary. It is home to one of the largest bird populations in the Indian Ocean, including many endemic species. Anchoring is done only during the day and is FORBIDDEN AT NIGHT. The story offers an exceptional diving spot.

La Digue and its moorings



Anchorage in La Digue



PORT OF THE PASS

4°20'80-55°49'80

In the Seychelles, La Digue has everything of a paradise.

Port de la Passe is the tourist center of La Digue with its shops, restaurants and bike rental companies.

The entrance to the port is through the pass and is marked by a red buoy and another green.

Pleasure boats can moor at the bottom of the port insofar as places are available.

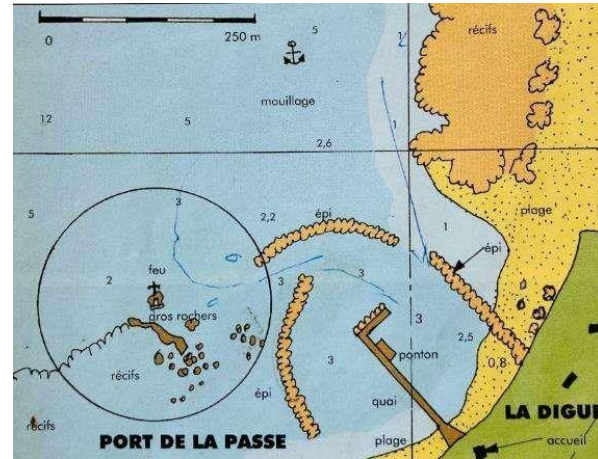
Source of Money

You will certainly be amazed by the quality of the immaculate white sand and its powdery appearance which contrasts with the monumental silvery rocks that dot it.

Sculpted by the wind and the waves, they have often surprising shapes.

The lagoon, surrounded by a coral reef, offers calm and shallow waters, ideal for exploring the seabed gently.

Depending on the tides, the beach changes completely. If at low tide the rocks are often revealed in full, they are surrounded by water at high tide and give a floating sensation.



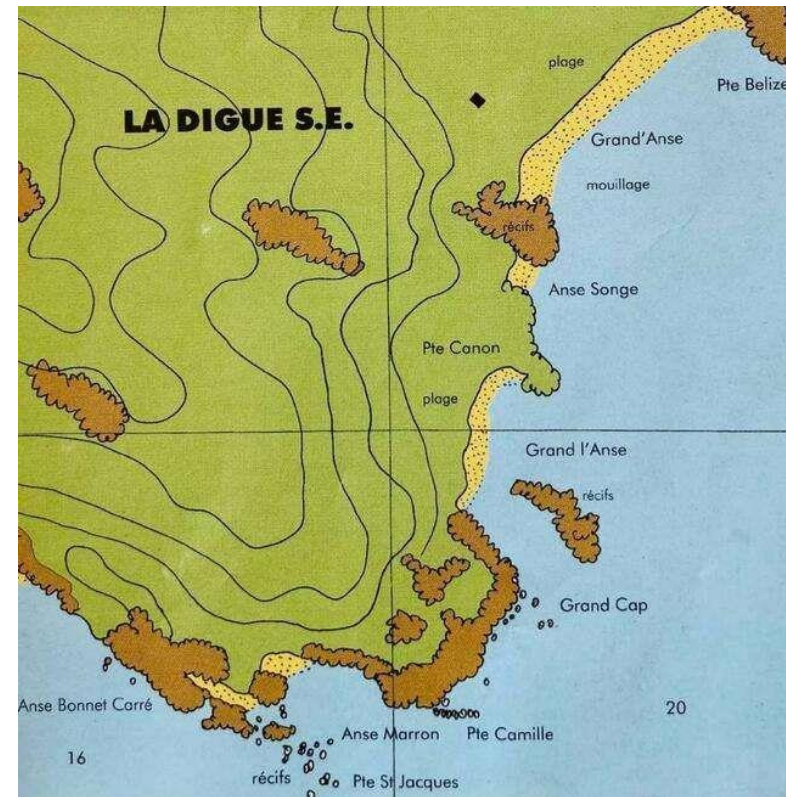
GRAND'ANSE

4°22'35"-55°51'15"

Grand Anse is a "wild" beach and its unique setting makes it absolutely magnificent.

It is certainly less frequented but it is no less beautiful, quite the contrary. A real gem!

The anchorage is done in front of the beach on a sandy bottom by 4 to 5 meters. Be careful all the same when disembarking because there are rollers, even when swimming, caution is required.



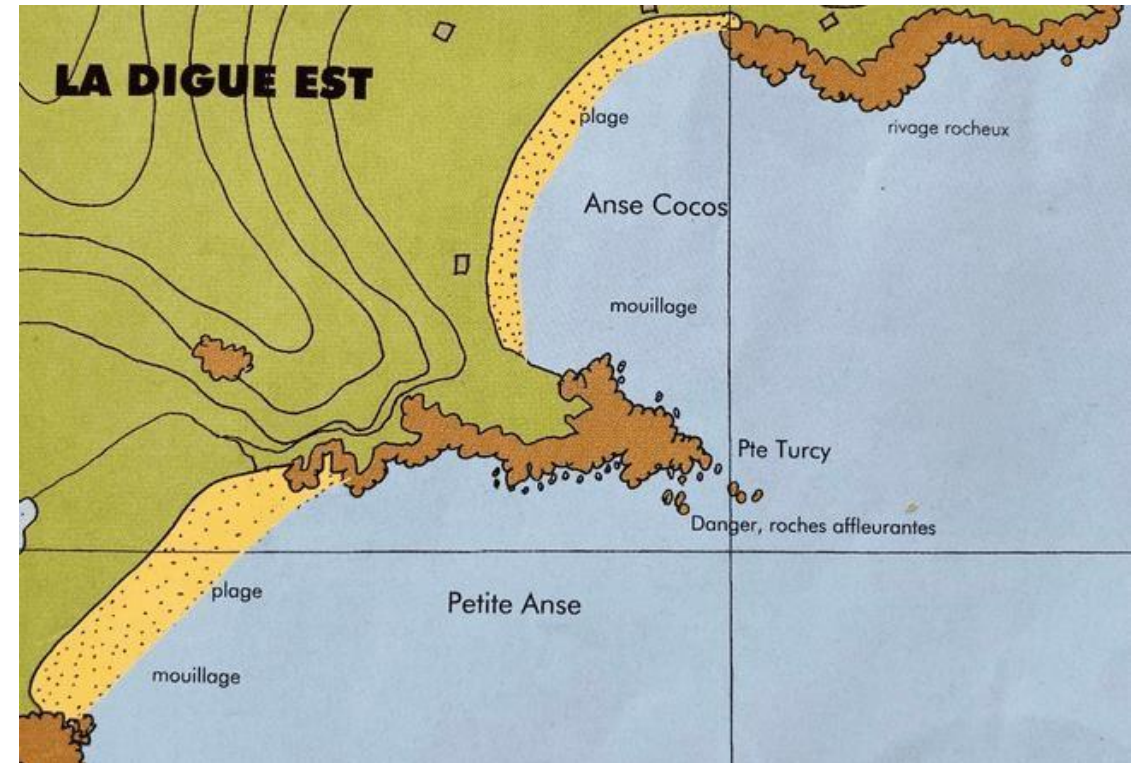
SMALL HANDLE

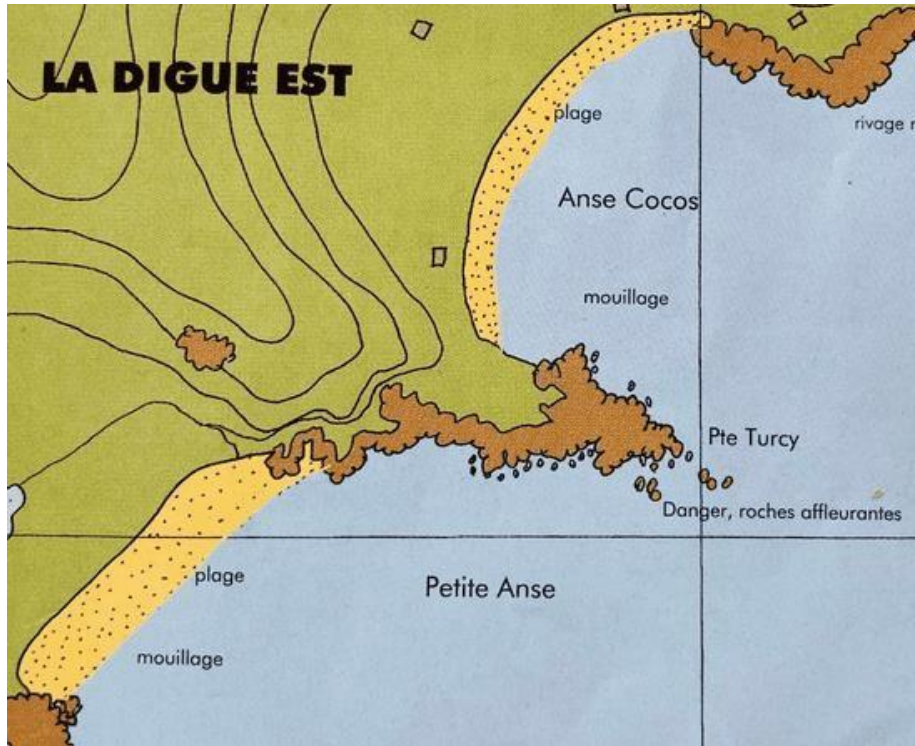
La Petite Anse is located next to Grand Anse in the south-east of La Digue.

The two beaches have a lot in common, such as the rapidly falling sea and the missing coral reef, but above all the “wild” setting.

It is absolutely worth the detour due to the impressive setting and the low attendance. This is a perfect beach for anyone looking for a quiet place for sunbathing and relaxation.

But as for Grand'Anse landings and swimming are difficult there, when there are rollers.





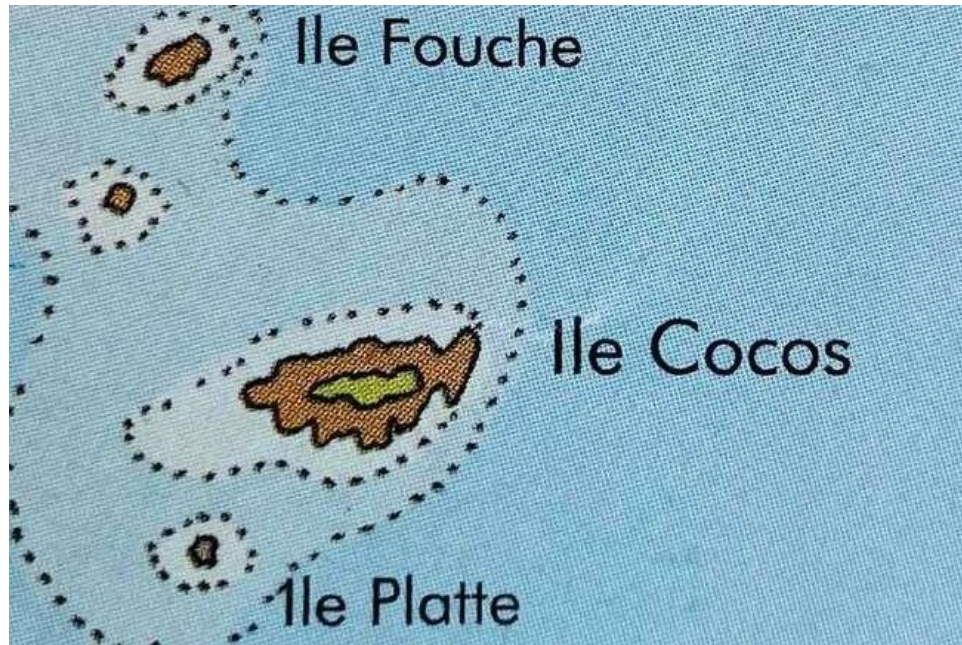
ANSE COCO
4°22'00-55°51'15

Anse Cocos is just behind Petite Anse.

White sand, natural pools, and shade- providing trees make this beach perfect for a lazy day. However, the waves can be very high during the southeast trade winds (from May to October) and the current can be very strong.

For those who like walking and not just sunbathing on the beach, Anse Cocos is a perfect place for a day trip.

After a little effort, a great reward awaits you: the freshness of the natural swimming pools.

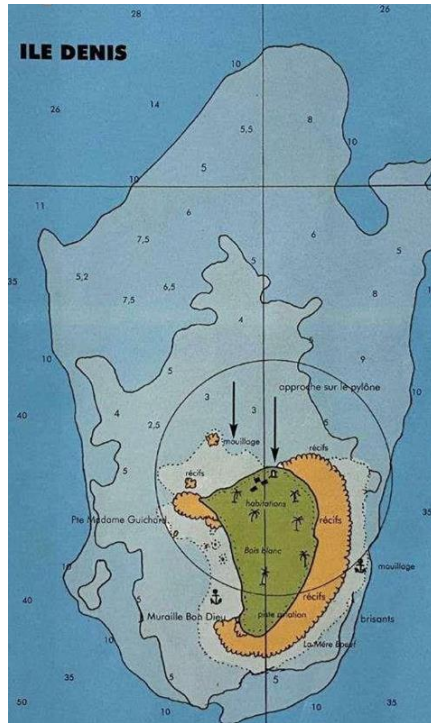


COCO ISLAND
4°18'42"-55°51'52"

Off Félicité Island you are here in the heart of one of the most beautiful diving spots in the Seychelles, a little corner of paradise where you will not have to swim far to find yourself immersed in a real life-size aquarium.

Cocos is one of the few islands in the region to have preserved its wild and inviolate aspect.

This superb islet is a marvel with dream beaches, turquoise and translucent lagoons and magnificently colored seabeds.



DENIS

Anchorage Muraille Bon dieu 3°48'35- 55°39'50
East side anchorage 3°48'15- 55°40

Denis is a private island. From this fact you cannot disembark (however you can try to obtain authorization to disembark by contacting the hotel before your arrival- +2484288962).

Anchoring is only allowed if there is a Seychellois skipper on board.

Lots of greenery, long white sand beaches and a protective coral reef characterize this beautiful island. A jewel among the islands.

The climate

The Seychelles have the advantage of being outside the line of passage of the cyclones which affect Reunion, Mauritius and Madagascar.

The archipelago, which only rarely experiences really strong winds, is placed under the monsoon regime and well-established NW and SE trade winds. In the shoulder seasons, the weather is very variable.

From mid-June to mid-October , the winds blow almost constantly from the SE in clear skies. They weaken in November to give way to NW winds which bring heavier skies sometimes accompanied by heavy clouds. The heaviest rainfall is in January. The SE wind regime returns in May.



Snorkeling spots

The Seychelles are a paradise for snorkeling: warm, crystal clear waters and excellent visibility!

The seabed of the archipelago is full of fish, rays and other turtles, just put your head under water to discover incredible underwater life.

Praslin

Anse Lazio

Often ranked among the most beautiful beaches in the world, Anse Lazio is one of the must-see sites in the Seychelles. Fringe of coconut trees and takamakas, fine carpet of white sand, crystalline waters of a dazzling blue: the charm operates from the first glance. Both ends of the beach, lined with granite boulders, offer excellent snorkeling opportunities.

It is possible to observe blue trevallies, garfish, surgeonfish, checkerboard wrasse, small moray eels.

Two areas are to be explored on the Anse Lazio spot . They are located at both ends of the beach, about 500m apart. Get into the water directly from the beach (at the level of the first rocks).



Anse Little Court

Anse Petite Cour is a small beach nestled in the north coast of Praslin, offering a superb view of Curieuse Island.

This small haven of peace, protected from the waves, is a famous snorkeling spot.

As the beach is privatized by a luxury hotel, accessing the spot requires a little organization, but the site is worth the detour.

Underwater, you will observe many emblematic species of the Seychelles reefs, such as butterflyfish and surgeonfish, all in a superb setting.



Saint-Pierre Island

An idyllic diving spot. This small islet offers a giant aquarium where mask and snorkel diving is ideal. These sea-beds are full of multicolored fish in crystal clear water.

It is easy to observe surgeon-clowns, sergeant-majors, trevallies and fusiliers. Anchorage, even during the day, is chargeable.



Anse-Volbert



No coral gardens but sand and seagrass sheltering starfish, exotic fish and even young hawksbill turtles.

Cove of La Blague

A little isolated beach, the bottoms are quite poor but it is possible to see moray eels, triggerfish, sergeant majors and many other colorful fish.

You should only dive here at low tide, so make sure you get here at the right time of day. At low tide, the water is very calm and snorkeling safer.

At high tide, the ocean becomes rougher, visibility decreases and conditions change drastically. We advise you to check with your hotel or a dive center if the weather and sea conditions are good for exploring this spot before going there.

You can enter the water from anywhere, but beware of stingrays hiding in the sand.



Anse La Farine

This anchorage is rich in coral and is home to many fish.



La Digue

Anse Source d'Argent

It is the mythical beach of the Seychelles. White sand, coconut palms, turquoise water and impressive granite rocks: this postcard setting is known the world over. This beach is ideal for beginners in snorkeling: unlike most other Seychellois spots, it is sheltered by a coral reef.

If the lagoon is shallow and poor in corals, you can observe many fish there. Only experienced practitioners will be able, when sea conditions permit, to venture to the other side of the barrier.

Its idyllic landscape is made up of long coconut trees and large granite rocks eroded by the turquoise sea, making it a perfect postcard of the Seychelles and it is possible to observe many species of fish there.





Anse Cayman

This cove is famous for observing turtles



Severe handle

It allows you to snorkel in a closed lagoon.

With your mask and snorkel on, expect to encounter surgeonfish, angelfish, hawksbill turtles and eagle rays.



Potato Cove

flanked by huge polished rocks and coconut trees leaning towards the sea, Anse Patate is like the most beautiful beaches in the Seychelles.

Relatively exposed to the waves, you can only practice snorkeling there when the sea conditions are perfect.

The key is the observation of many hawksbill turtles, sometimes very close to the edge, and a relatively preserved coral reef that begins about thirty meters from the shore.

Felicite and big sister

Coco Island

A stone's throw from La Digue, the sumptuous seabed of Coco Island looks like a natural aquarium. Around this paradisiacal islet bathed in limpid waters, you will evolve in the middle of turtles and hundreds of fish, above a profusion of corals. If there is no shortage of quality sites in the Seychelles, snorkeling enthusiasts should not leave the archipelago without having explored this exceptional spot.

This small island near La Digue is surrounded by very beautiful seabed and magnificent corals. It is possible to admire hawksbill turtles, leopard rays, blue damselfish...



Mahé

Port-Launay

The Port Launay Marine Park, in the northwest of Mahé, is full of angelfish, moray eels, turtles.

It is possible to see more than 60 species of fish there.



Anse-Major

Anse Major is a small bay located on the wild coast of Mahé, in the north of the island. To get there, you will have to hike for a good hour through the Morne Seychellois National Park, most often under a blazing sun.

But once you reach the small white sand beach, you will quickly realize that it was worth it! This small bay with crystal clear waters is home to superb reefs full of underwater life, and you will have a great time underwater.



Baie Lazare

Baie Lazare, adorned with a lagoon and lined with coconut palms, is one of the most beautiful beaches on Mahé.

Partly protected by a coral reef, it is home to an excellent snorkeling spot where you can explore both the lagoon and the outer face of the reef.

On the program, in particular, several species of angelfish and impressive schools of humpback parrotfish.



Anse Soleil

Anse Soleil, nestled in tropical vegetation, is a small haven of peace much appreciated by Seychellois. Its 300 meters of beach, bordered on both sides by granite rocks, open onto a small bay with calm, turquoise waters. With its coral reefs in perfect condition and its abundant underwater life, Anse Soleil is one of the best snorkeling spots on the coast of Mahé.



Fairyland Beach

A popular little beach in the southwest of Mahé, Fairyland Beach offers a heavenly setting, with coconut palms and granite boulders overlooking a crystal-clear lagoon. From the point of view of snorkeling, the funds are not extraordinary, but make it possible to observe a beautiful diversity of colored fish, and this at shallow depth.



Sainte-Anne Marine Park



More information on this site grouping all the snorkeling sites in the Seychelles:
<https://www.snorkeling-report.com/fr/region/snorkeling-seychelles/>

The Sainte-Anne Marine National Park was created in 1973 to protect the marine environment of this small group of six islands located less than 5 kilometers off the coast of Victoria, the Seychelles capital.

It is the first marine protected area to have been established in the South West Indian Ocean. Accessible only by sea, the Park brings together a unique concentration of marine ecosystems.

It protects coral reefs, but also one of the largest granite bed seagrass in the Seychelles.

In the warm waters surrounding the islands, snorkelers will spot a large number of tropical species, including manta rays, which visit the area every year from April to December.

Scuba diving

The large rounded rocks of the granitic islands are found under the sea up to the plateau 50 to 60 meters deep. It is around Mahé and the neighboring islands that one can discover the most beautiful seabed.

The sculpted rocks are covered with soft coral and sponges. Fish are found in large numbers almost everywhere because the islands are mostly isolated in the ocean. It is possible to dive on several wrecks. The average depth of the dives is between 8 and 20 meters. Dives to 30 meters are rare.

Diving centers can be found in hotels on the preferred islands for a stay in the Seychelles. Mahé, Praslin, La Digue, Silhouette, Frégate and Denis Island in the Inner Islands. Alphonse and Desroches Island in the Outer Islands.





Victoria

The capital of the Seychelles is a city of 20,000 inhabitants whose seaside is entirely occupied by the quays of the commercial port where container ships moor daily, but also many large trawlers for seine fishing flying the flag.

French, Spanish, Japanese or Russian.

The small town offers a few green esplanades and avenues lined with cafes. Do not miss the daily market in Victoria.

With fruit and vegetable merchants as well as fishermen, it's a colorful market. It is ideal to go to the market when you arrive, and to complete your supply of fruits, vegetables and local spices.

Seychellois cuisine



Creole cuisine reflects the ethnic diversity of the Seychelles. You will find through its dishes, a rich mixture of French cuisine, the exoticism of Indian dishes and the spicy flavors of the Orient.

Seychellois recipes are mainly made from fresh fish and seafood. The main local specialties are: grilled fish or octopus with a spicy sauce, ginger and garlic puree, and octopus kari, prepared with coconut milk. In the restaurants you will discover all the secrets of this delicious Seychellois gastronomy.

The typical dishes of the cuisine of the Seychelles result from the mixing of cultures where spices and aromatic herbs take center stage.

Rougaille

In reality, rougaille is not a dish in itself, but a tomato sauce with spices and aromatic herbs. The sauce accompanies most of the typical dishes of the Seychelles, based on meat or fish.

Heart of palm salad

This salad, also called the millionaire salad, is prepared with fresh hearts of palm. A dish that has nothing to do with the canned heart of palm to which we are accustomed. Seasoned with oil, pepper and lemon, it's a real treat.

Clams soup

In a country where the sea plays an essential role, a good soup of fresh clams cannot be missed. Without a doubt, it is one of the dishes to be savored in the Seychelles, you will lick your chops. This dish prepared with premium clams, tomatoes, ginger and garlic, although very simple, is nevertheless a delicacy worthy of the gods.

Tektek

This delicious seafood soup is another of the traditional dishes to be tasted at all costs in the Seychelles. To prepare it, in addition to fresh seafood, you need onion, garlic and parsley. The soup is very tasty and perfect to whet the appetite.



Cari Coco

The locals give this evocative and melodious name to fish or meat curry, its flavor is sweet, because it is made from coconut cream. Meat and fish can be cooked with this thick coconut cream typical of the Seychelles, which gives it a special and unique touch. It is only in these islands that you will taste this dish.

Shark chutney

Shark chutney, also called chatini rekin , is usually served as an appetizer. This typical Seychelles gastronomy platter is prepared by cutting shark meat into small pieces and boiling it, it is served with lemon juice, salt, pepper, fried onions, turmeric and a very strong in taste, characteristic of the country: the bilimbi.

Brèdes

This spinach-like vegetable is one of the few iconic island dishes. With the brèdes, the traditional brède broth or spinach broth is prepared, a perfect starter that will delight fans of vegetable soups.

Bat stew

This exquisite delicacy is perhaps the most curious dish to discover in the Seychelles, it consists of a bat meat curry. This little animal in question is a species known as a fruit bat, considered a delicacy by locals.

Grilled fish

Fish in the Seychelles is prepared with garlic, ginger and chilli to give a succulent dish. You can also prepare an exquisite Seychellois chatini or fish chutney with the fish.

Breadfruit and heart of palm

Sometimes, the rice is replaced by the heart of palm as an accompaniment, cooked in a special way to preserve all its taste. Do not hesitate, taste it, it will not leave you indifferent.

KatKat Banana

For dessert you can enjoy this succulent banana cooked with coconut milk, it is one of the most emblematic desserts of the Seychelles that you cannot ignore.



Contact us!

SAILOÉ

+ 33 (0)2 97 84 61 61
+ 33 (0)6 08 98 54 79

charter@sailoe.com
www.sailoe.com



DISCOVER OUR OTHER BASES :

Corsica
Carribbean
Brittany

